

Effective Jan. 1, 2024

CUSTOMER-OWNED RENEWABLE GENERATION

NET METERING 25 kW_{AC} OR LESS



How does the program work?

Owners of solar, wind and other qualifying renewable generation of 25 kW_{AC} or less can use the electrical output of their system to supply all or a portion of their monthly electric use and sell the surplus to LES.

How will you be compensated?

Any net positive energy delivered to LES will be credited to the customer's bill each month. LES will subtract the cost of the metered energy supplied to LES. LES will purchase any excess energy according to the Renewable Net Metering Rider at [LES.com/ResidentialRates](https://www.LES.com/ResidentialRates).

In addition, customers whose system is installed by a participant in LES' Solar Trade Ally Network may qualify for a one-time capacity payment. A list of participants is available at www.LES.com/Solar. This limited-time incentive is determined by the system size and direction the system is facing, for example:

- **Southern facing fixed-photovoltaic solar** - the unit's nameplate DC capacity (kW) x \$375. The tilt of the panel must be greater than zero (0).
- **Western facing or single or dual axis tracking fixed-photovoltaic solar** - the unit's nameplate DC capacity (kW) x \$475. The tilt of the panel must be greater than zero (0).

- **Wind** - No capacity payment.
- **Other technologies** - \$1,000 x the average net demand output of the generation (kW) at 5 p.m. during the months of July and August (as determined by LES).

Safety requirements

An outside-mounted visible disconnect switch shall be installed on the owner's side of the point of delivery/recept near the meter or some other mutually agreed location. Such equipment must be capable of preventing the renewable generation from energizing the LES service wires and must include a device which, at LES' discretion, allows LES employees to operate and lock in place. For the safety of LES personnel and the electric system, interconnection of any power-generating device to LES power lines must have a permit, be inspected and be approved prior to operation.

In addition to the required disconnect switch, your inverter must meet the current UL 1741 and IEEE 1547 specifications.



FOR MORE INFORMATION

Visit [LES.com/Solar](https://www.LES.com/Solar) or contact an LES Energy Services specialist at **402.475.4211** or energyservices@LES.com.

Step 1: Plan

- Review, sign and return the LES Solar Buyer's Checklist at [LES.com/Solar](https://les.com/Solar) to [energyservices@LES.com](mailto:energyservices@les.com).
- Review the Solar Trade Ally Network participant list at [LES.com/Solar](https://les.com/Solar).
- Learn more about net metering at [LES.com/MyGen](https://les.com/MyGen).
- Your installer submits a Net Metering Application and other required documentation to LES for review.

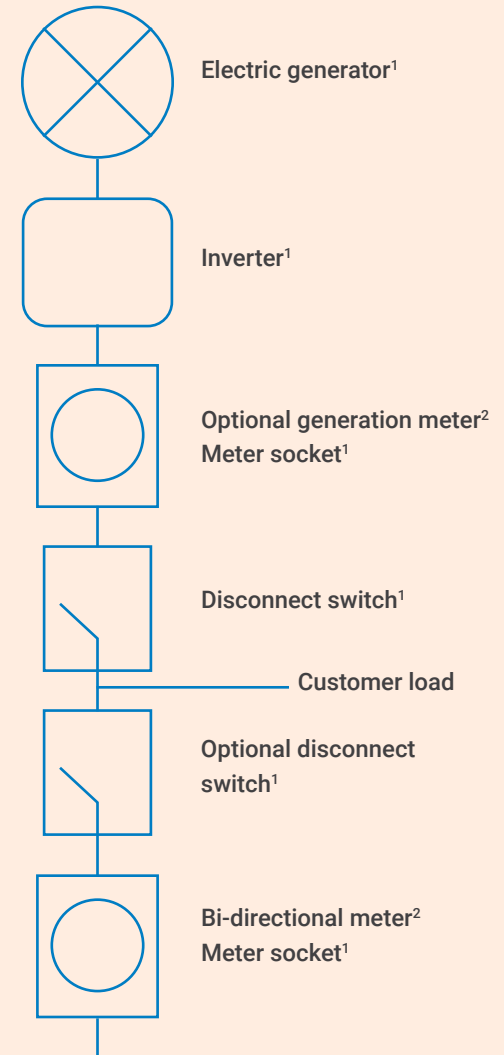
Step 2: Install

- Upon approval of your Application for Review, your installer may begin installation of your renewable generation system including generator, inverter, readily accessible and lockable AC disconnection switch and other equipment as needed.
- You may not interconnect until Step 3 is completed as per site inspection and setting of a bi-directional meter.

Step 3: Inspections & interconnection

- Your installer will need to request all required city inspections.
- You must submit a signed Net Metering Interconnection Agreement.
- Arrange for an LES site inspection by contacting LES at 402.475.4211 or [energyservices@LES.com](mailto:energyservices@les.com) to approve system interconnection, AC disconnect switch and to set a bi-directional meter to measure both energy provided by LES and energy generated by your system.
- Upon successful completion of the LES site inspection, your system will be interconnected and you will be mailed your one-time capacity payment if your system qualifies and you used a participant in LES' Solar Trade Ally Network. You also will receive credit for any energy generated in excess of what you consume in a given billing period.

SAMPLE ONE-LINE DIAGRAM FOR INTERCONNECTION OF CUSTOMER-OWNED GENERATION



¹Customer responsibility

²LES responsibility

