

T H E R M O V I S I O N I N F R A R E D

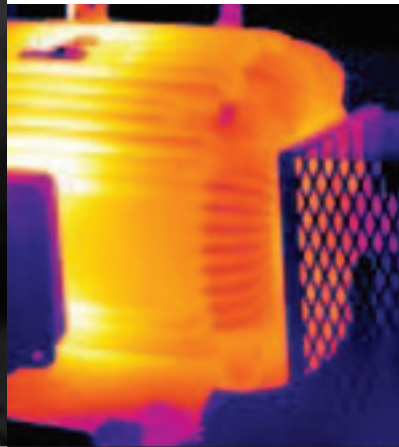
S C A N N I N G S E R V I C E

Prevent electrical system failures before they happen.

ThermoVision, LES' low-cost, non-intrusive infrared scanning service, provides you early warning of potential electrical component failures in your systems and equipment that can help you avoid costly downtime.

With ThermoVision, you get:

- **Advanced Warning** of potential failures, so that you can schedule repairs rather than react under pressure to costly emergencies.
- **Visual Identification** of electrical problems, that pinpoints where corrective action is needed to reduce costly diagnosis time and avoid the inconvenience of unplanned downtime.
- **Improved Safety Management** through early identification of potential hazards that could endanger personnel and impact insurance costs.



ThermoVision can identify and record potential failures in:

- Electrical equipment and systems in offices, plants and factories.
- Electrical production and distribution systems, including generators, transformers, switches, fuses, circuit breakers and other associated components.

The ThermoVision Inspection.

When components of electrical systems begin to fail, a common symptom is a significant temperature difference between a failing

component and its surroundings. ThermoVision, using infrared scanning technology, detects and records thermal anomalies so you can identify and correct problems before breakdowns result in costly business interruptions. Our on-site, non-intrusive ThermoVision inspection can normally be done without interruption of your operations.

The non-intrusive procedure identifies and documents thermal abnormalities in your equipment. Abnormalities or anomalies are typically caused by loose or deteriorated connections, short circuits, overloads, load imbalances or faulty, mismatched or improperly installed components.

Our surveys, conducted by certified thermographers, using state-of-the-art infrared imaging equipment and custom analysis and reporting software, provide you a thorough inspection and report of your equipment and facilities.



Infrared Inspection

Identifies and documents thermal anomalies in your electrical equipment.

Preparing today
for tomorrow's world.

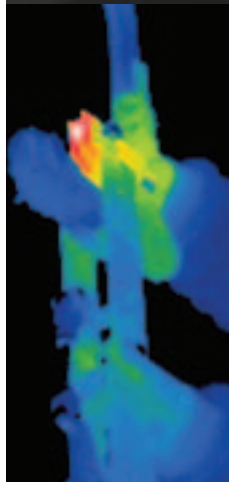
www.les.com

LES



You will receive:

- A thorough ThermoVision infrared survey conducted by certified LES thermographers working with your staff to ensure a complete and thorough coverage of your equipment and facilities.
- Identification of anomalies, including thermographic photographs of “hot spots” and a detailed report of your ThermoVision inspection.
- A follow-up inspection after you’ve repaired problems identified in your survey, to ensure the corrections were effective.



If you’d like more information about the ThermoVision Program or to arrange an appointment, give us a call at 467-7537 or visit us online at www.les.com. An Energy Services Representative will be glad to assist you.

**State-of-the-art
Imaging**

Infrared inspection
is a powerful,
non-intrusive
diagnostic tool.

