

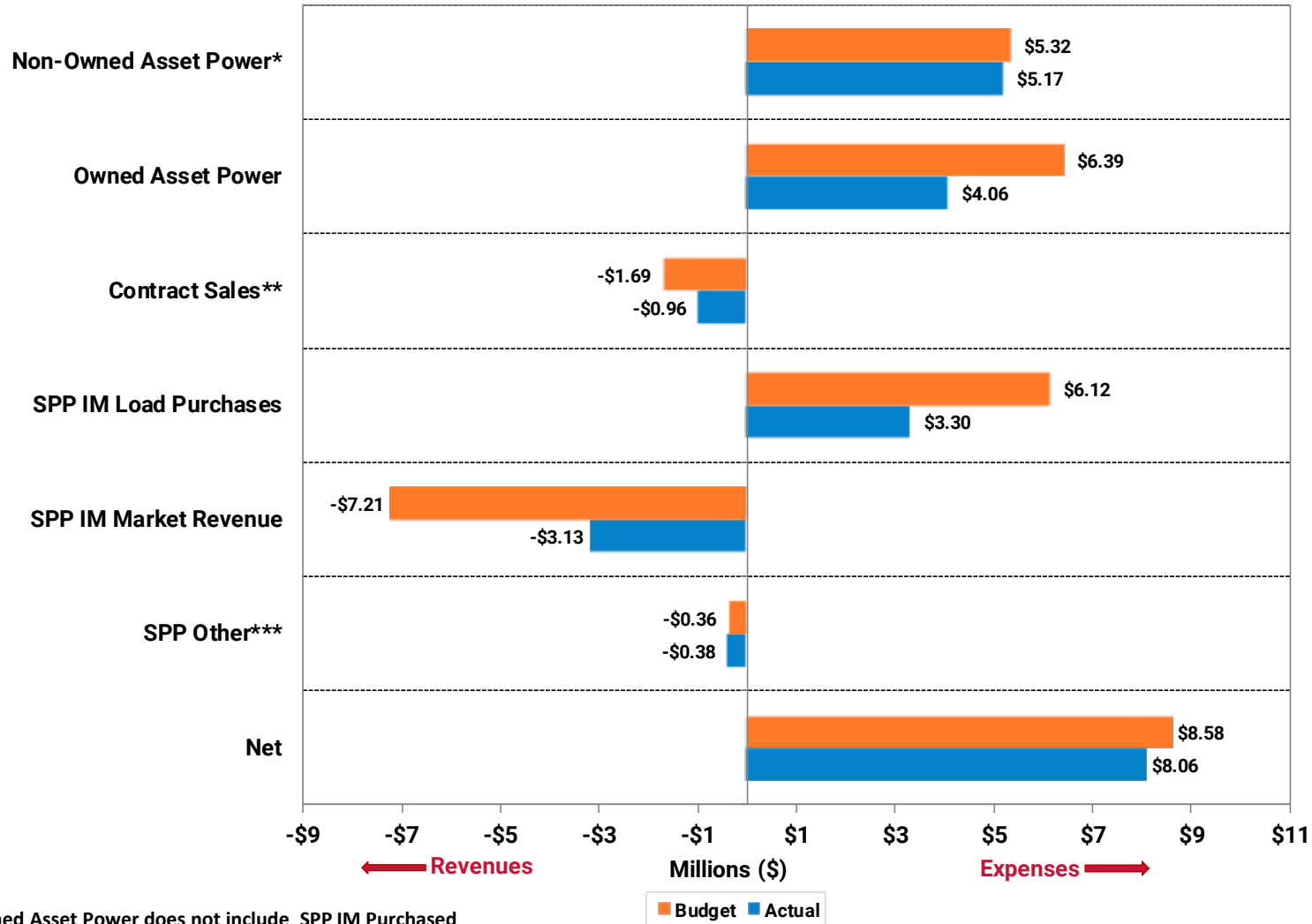
# **Power Supply Division 2020 December Monthly Report**

**January 15, 2021**

**Jason Fortik**

**Vice President, Power Supply**

# Monthly Actual vs. Budget

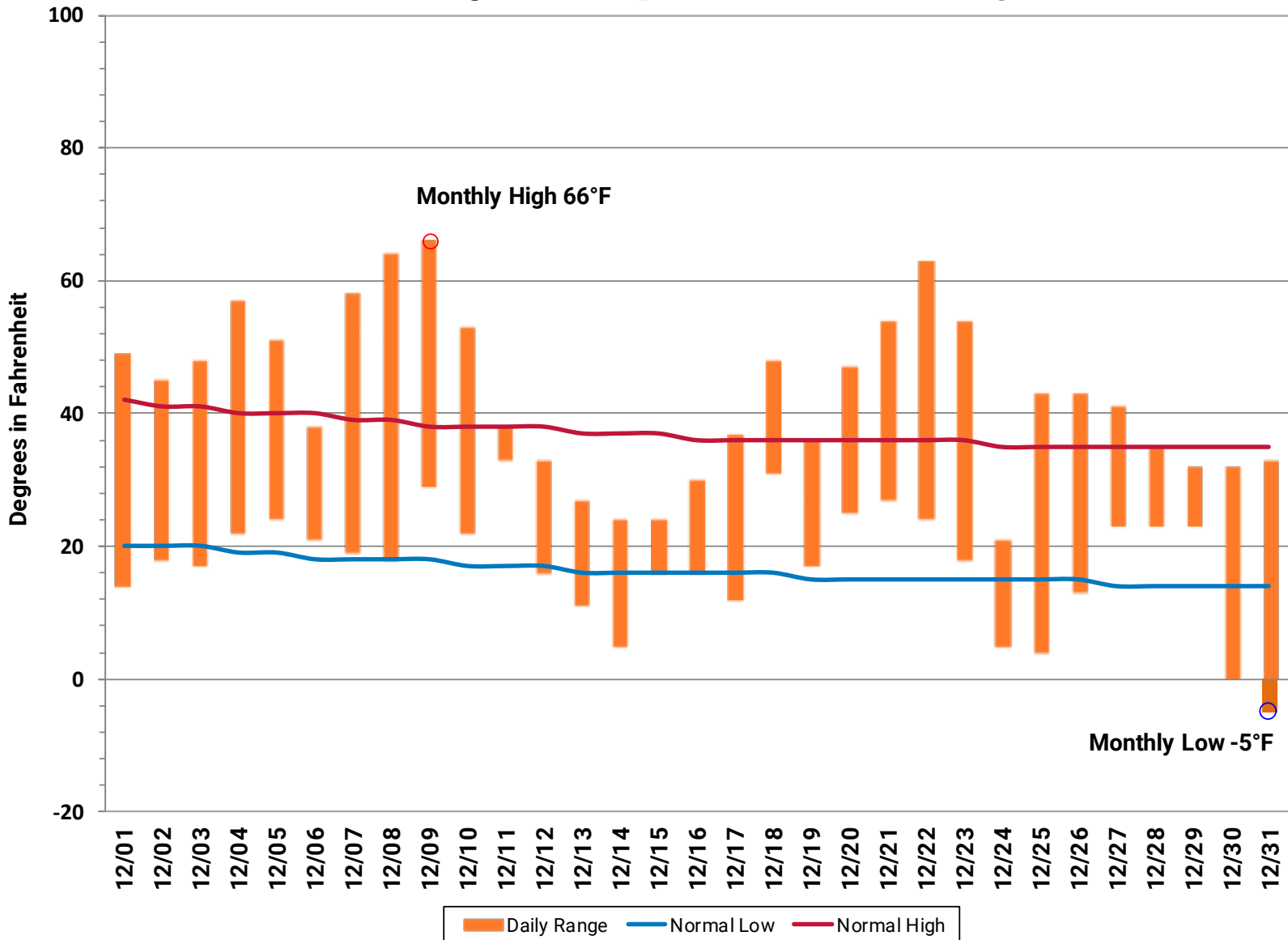


\*Non-Owned Asset Power does not include SPP IM Purchased

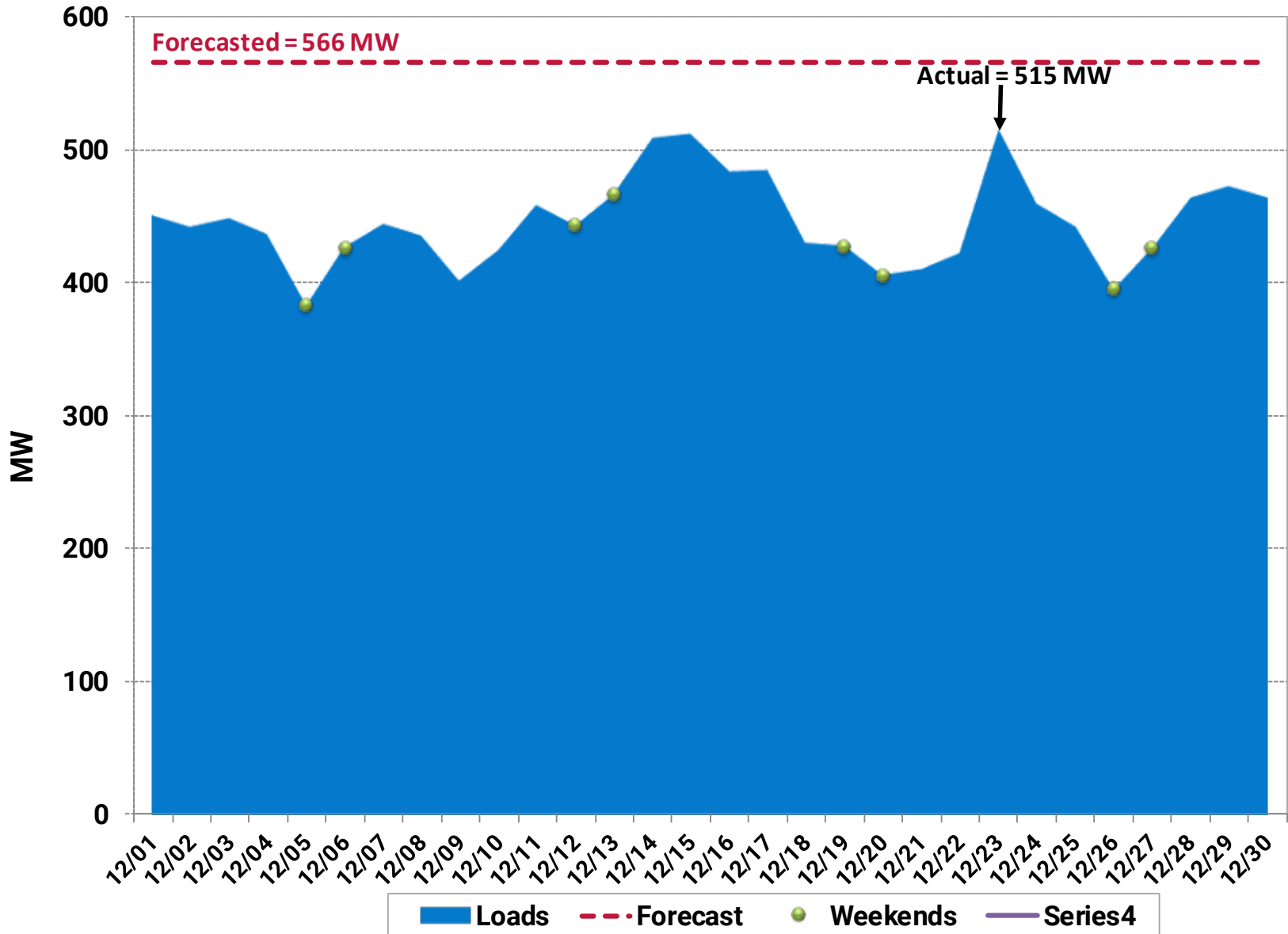
\*\*Contract Sales does not include SPP IM Revenue

\*\*\*SPP Other includes Over-Collected Losses and ARR's/TCR

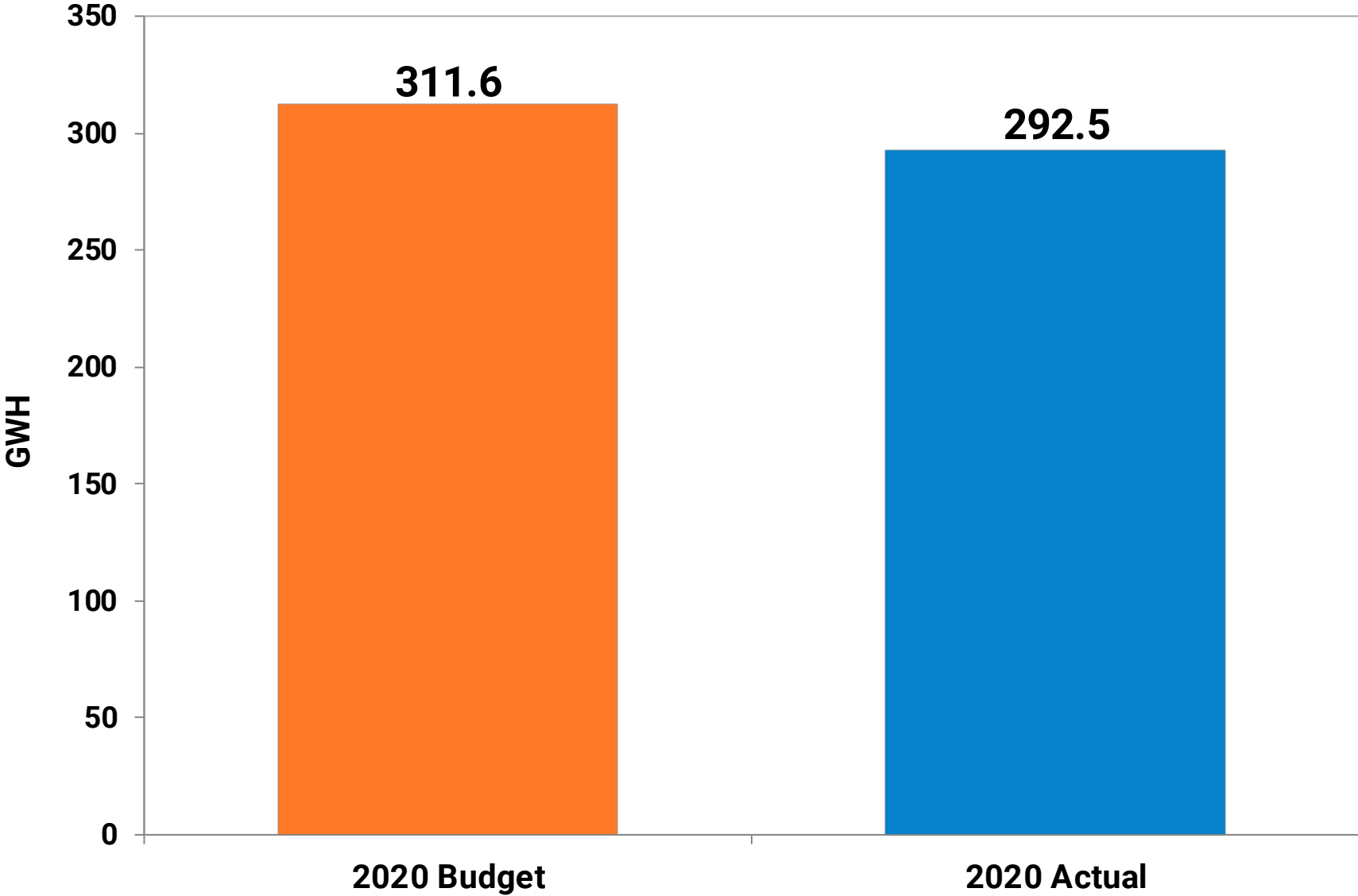
# Daily Temperature Range



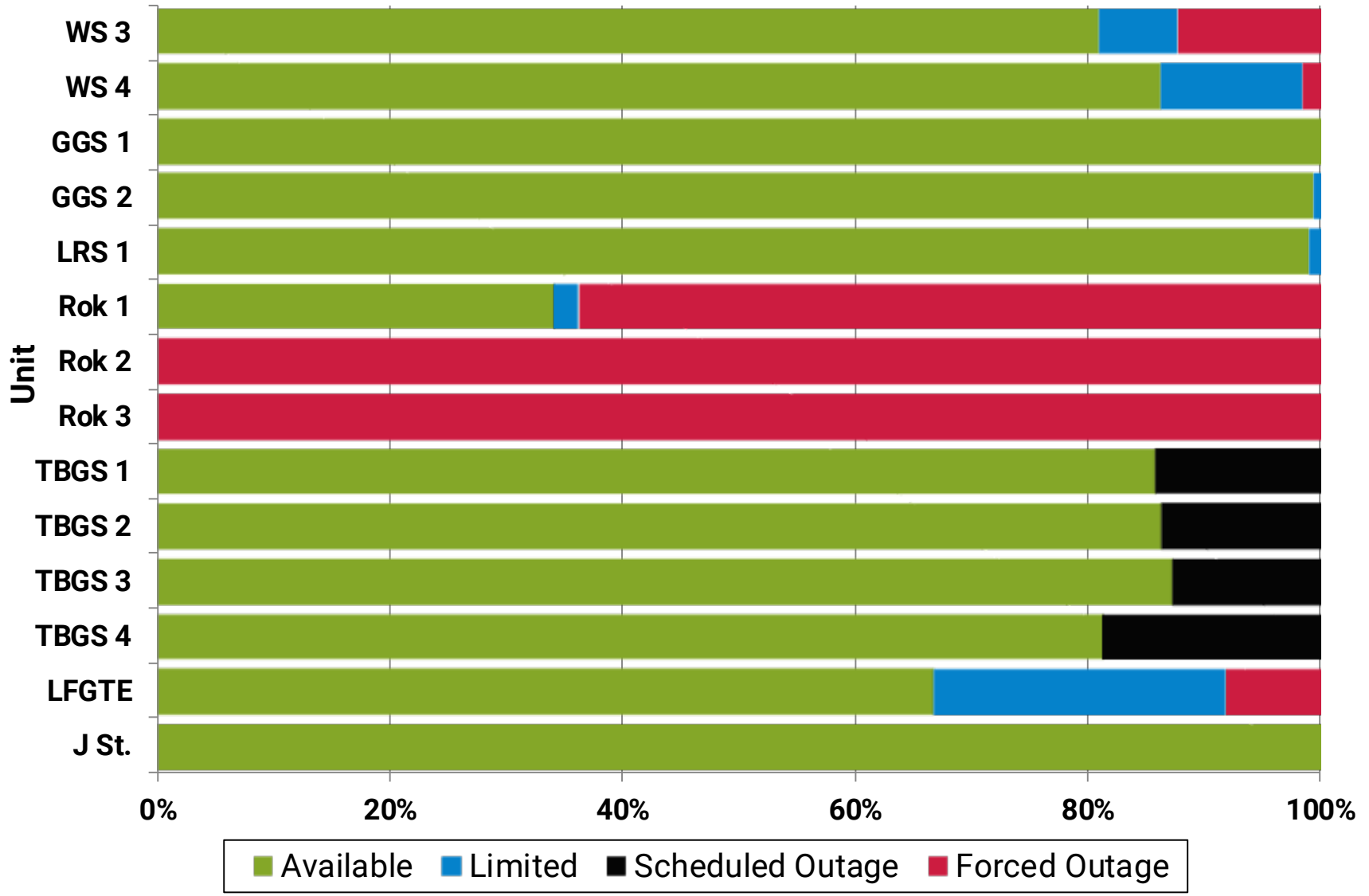
# Loads



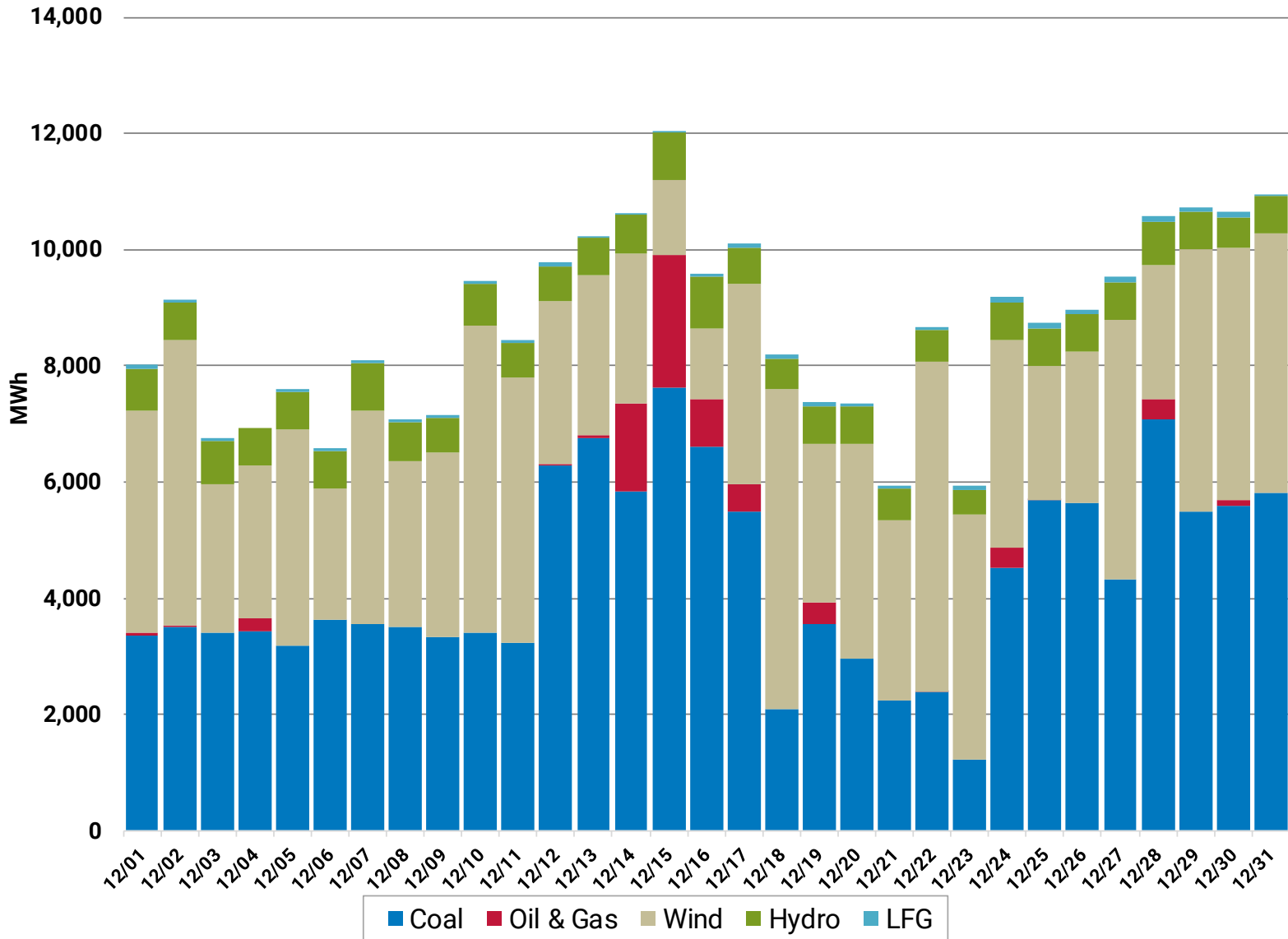
# Customer Energy Consumption



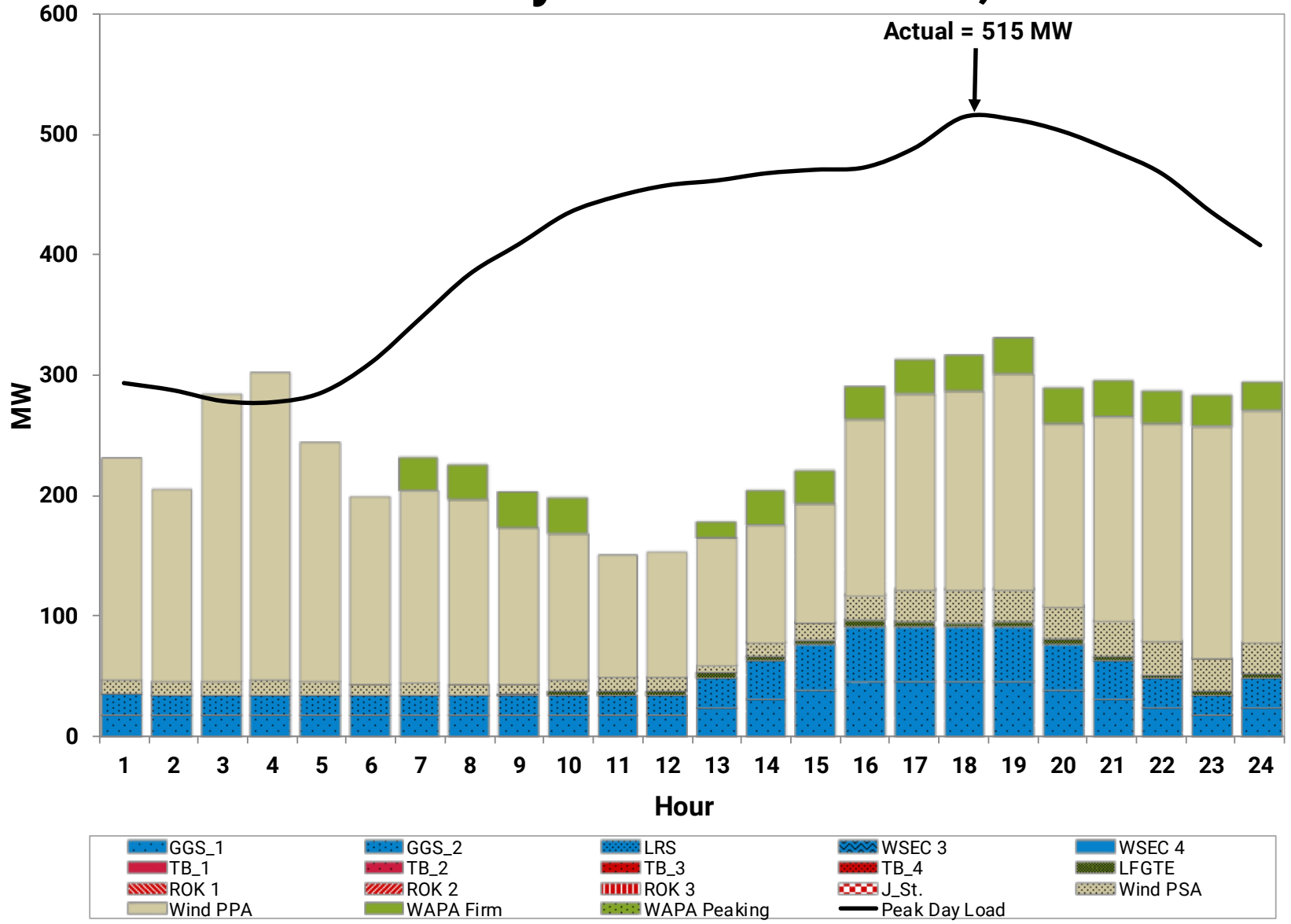
# Unit Equivalent Availability



# Resource Energy

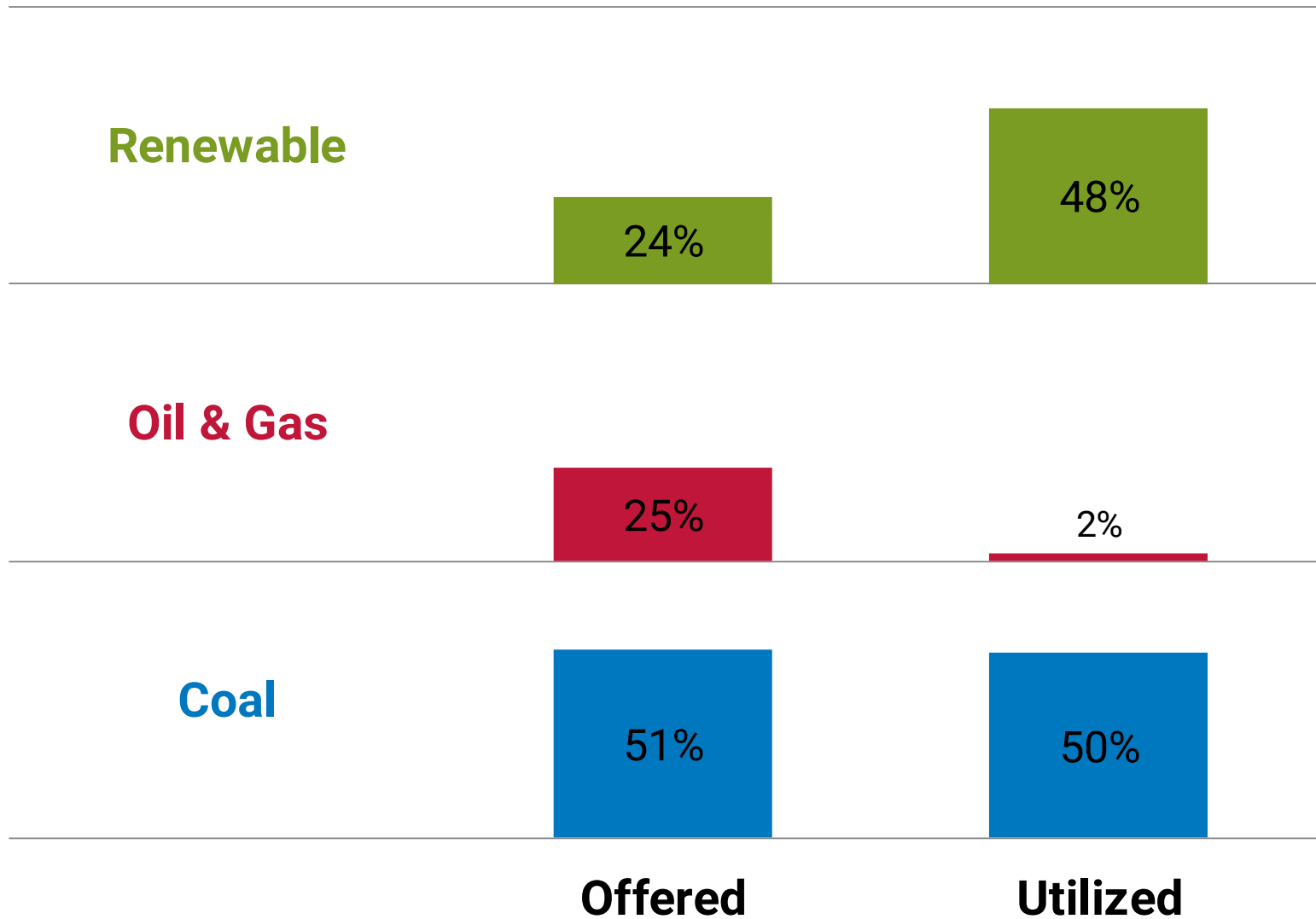


# Peak Load Day – December 23, 2020



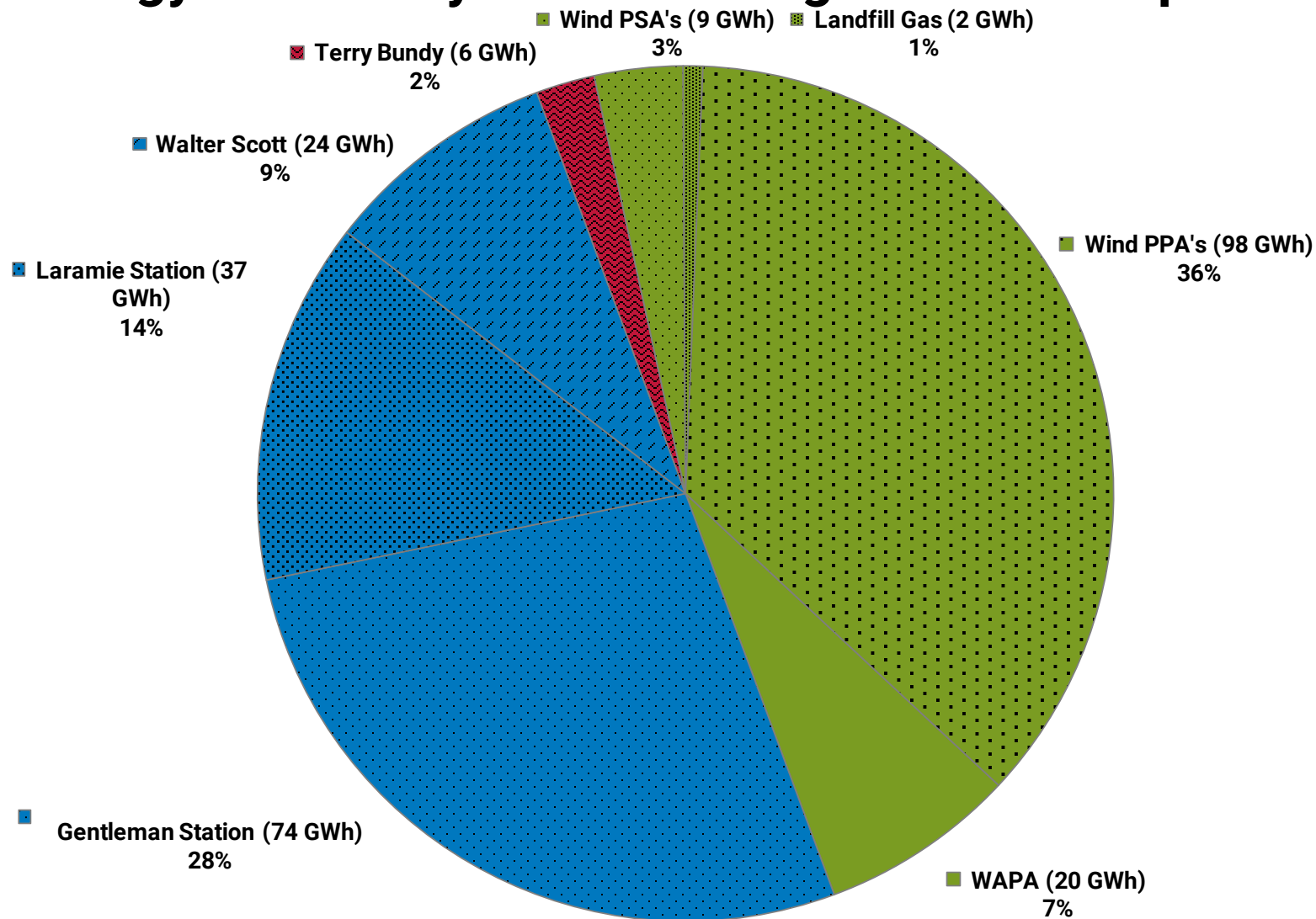


# Energy Offered and Utilized by the SPP Integrated Marketplace (Fuel Type)



Note: Total percentage may not add up to 100% due to rounding

# Energy Utilized by the SPP Integrated Marketplace



Note: Total percentage may not add up to 100% due to rounding