

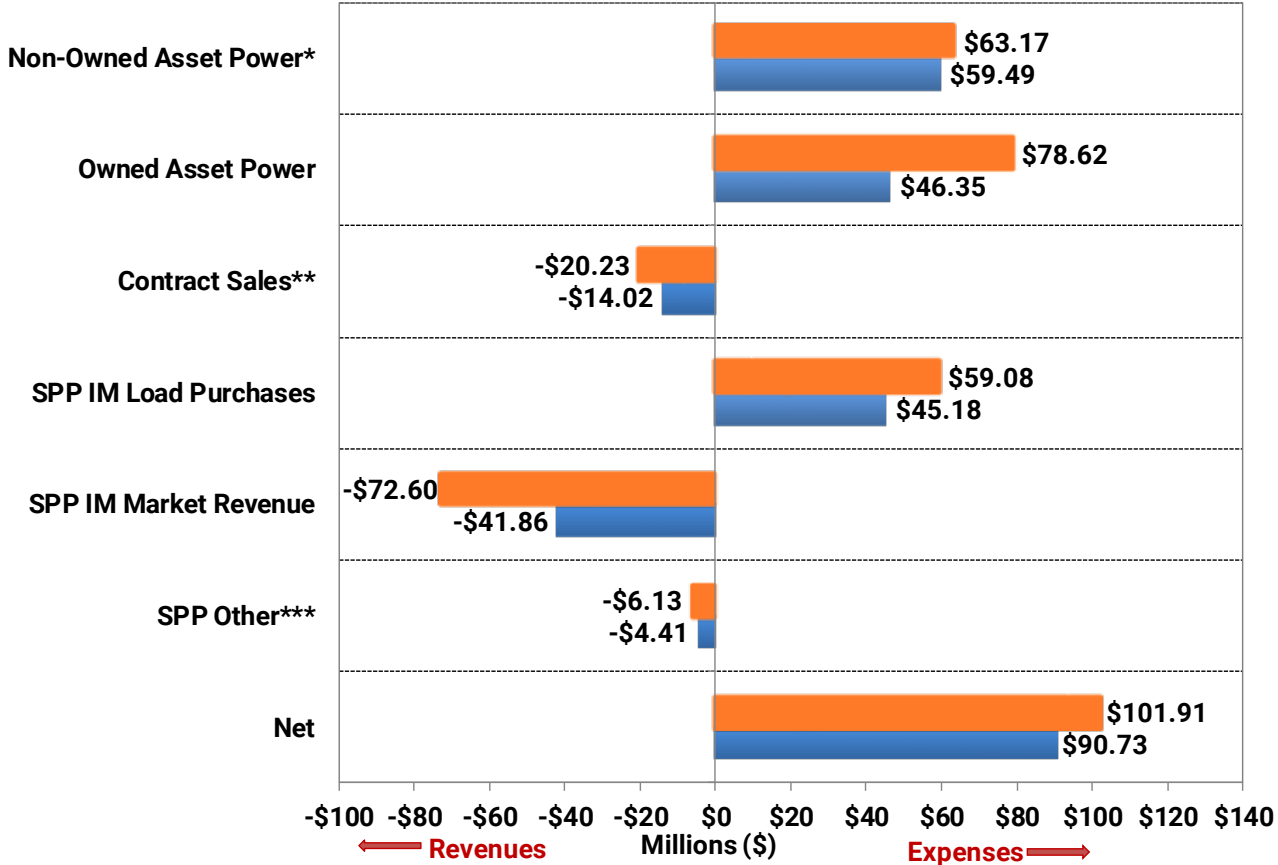
# Power Supply Division 2020 Year End Review

January 15, 2021

Jason Fortik

Vice President, Power Supply

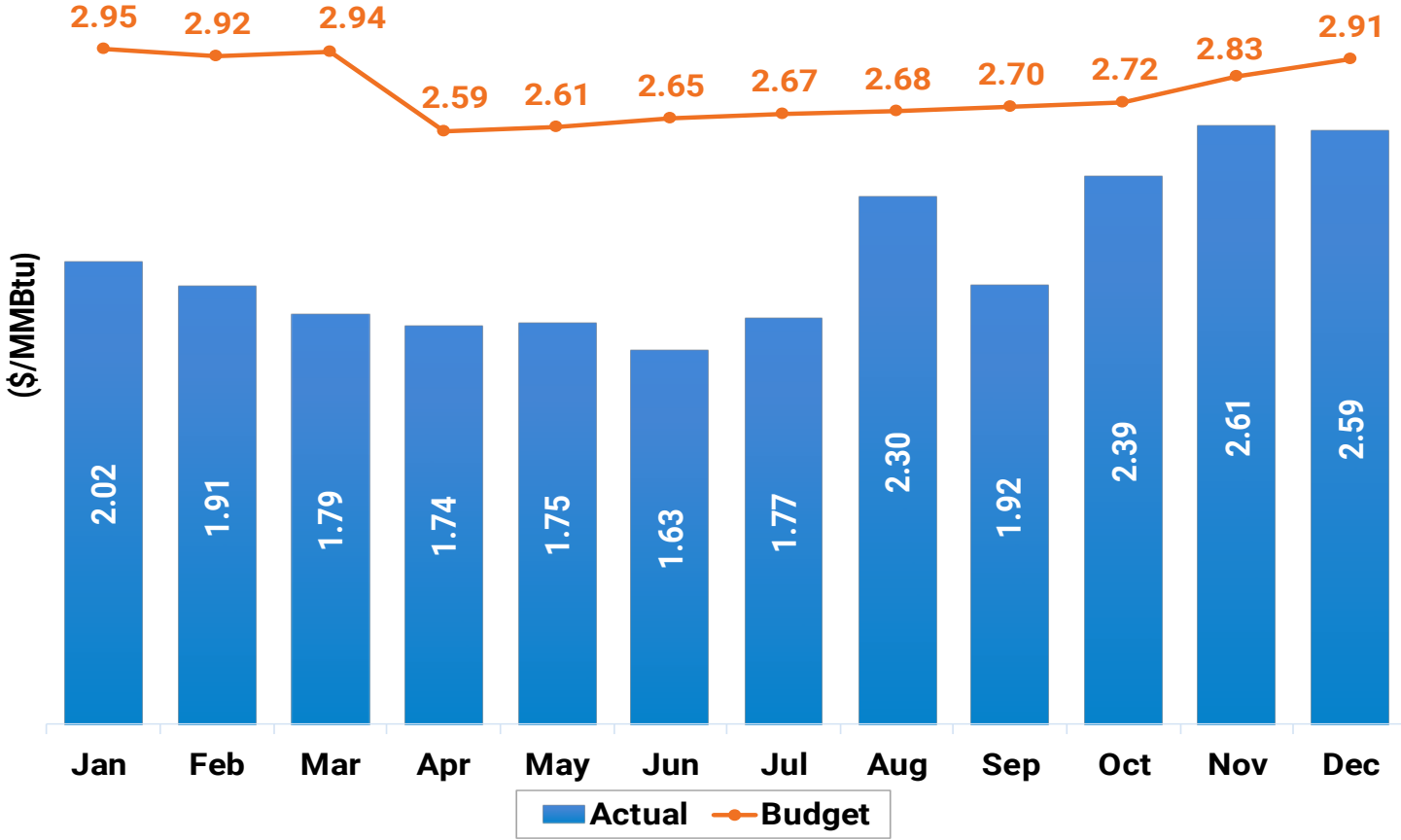
# 2020 Net Power Costs are \$11.2M<sup>1</sup> (11.0%) below Budget. Lower generating plant operating expenses and energy purchase expenses more than offset the reduction in energy sales revenue.



\*Non-Owned Asset Power does not include SPP IM Purchased  
 \*\*Contract Sales does not include SPP IM Revenue  
 \*\*\*SPP Other includes Over-Collected Losses and ARR's/TCR

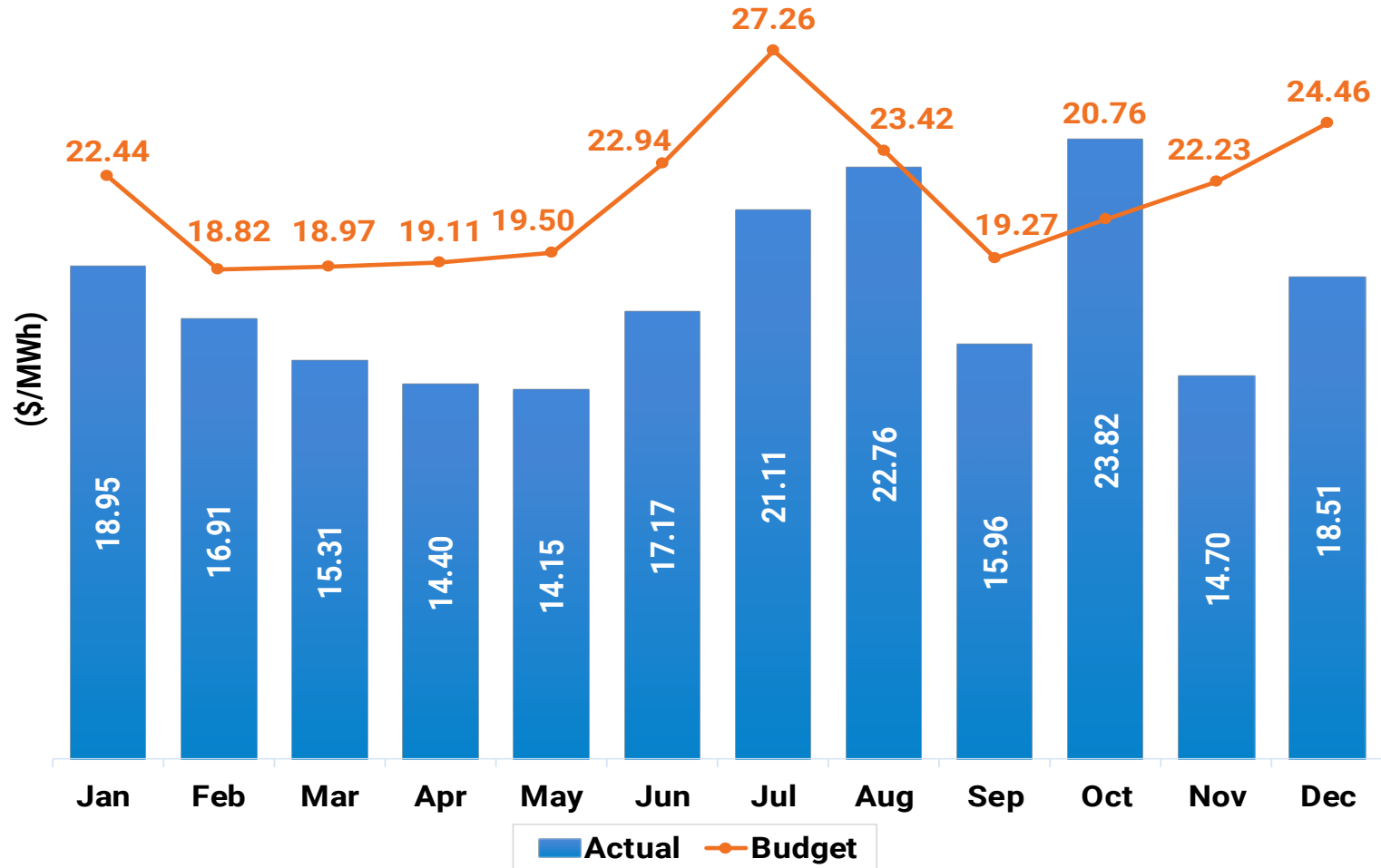
1. Year End projected adjustments may change Net Power Costs to \$12.9M below Budget

# Natural gas prices remained below Budget for the year, although they reached some of their highest levels in Q4 due to increasing industrial and commercial demand and supply limitations caused by earlier reductions in production capability

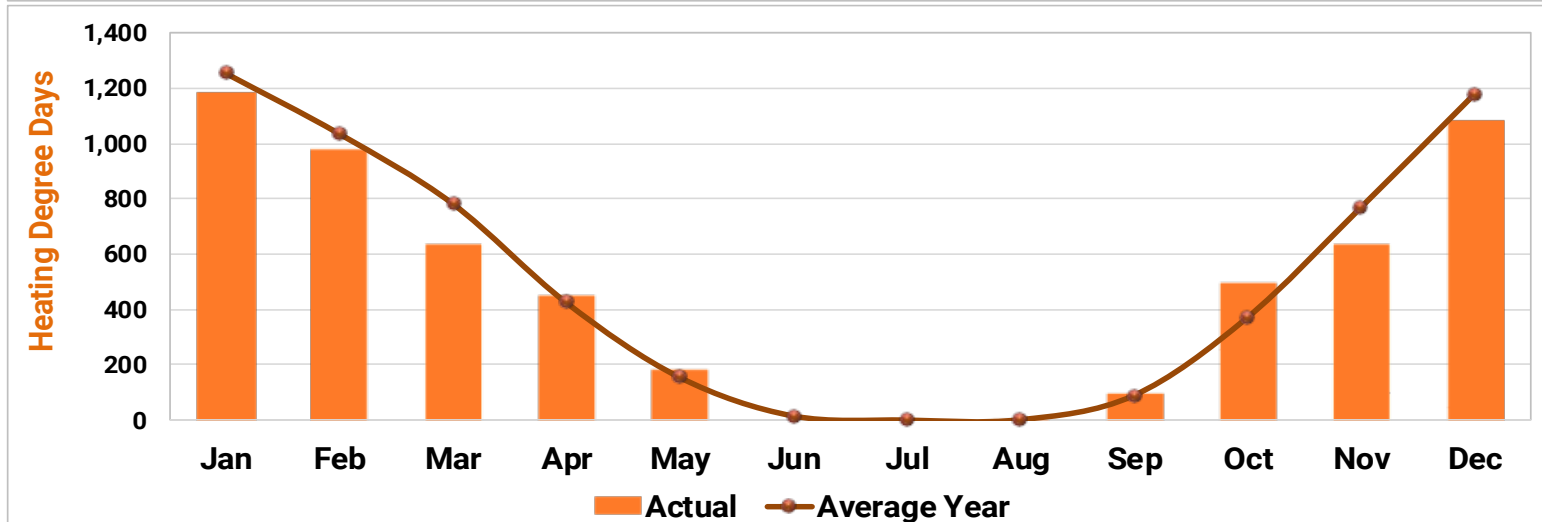
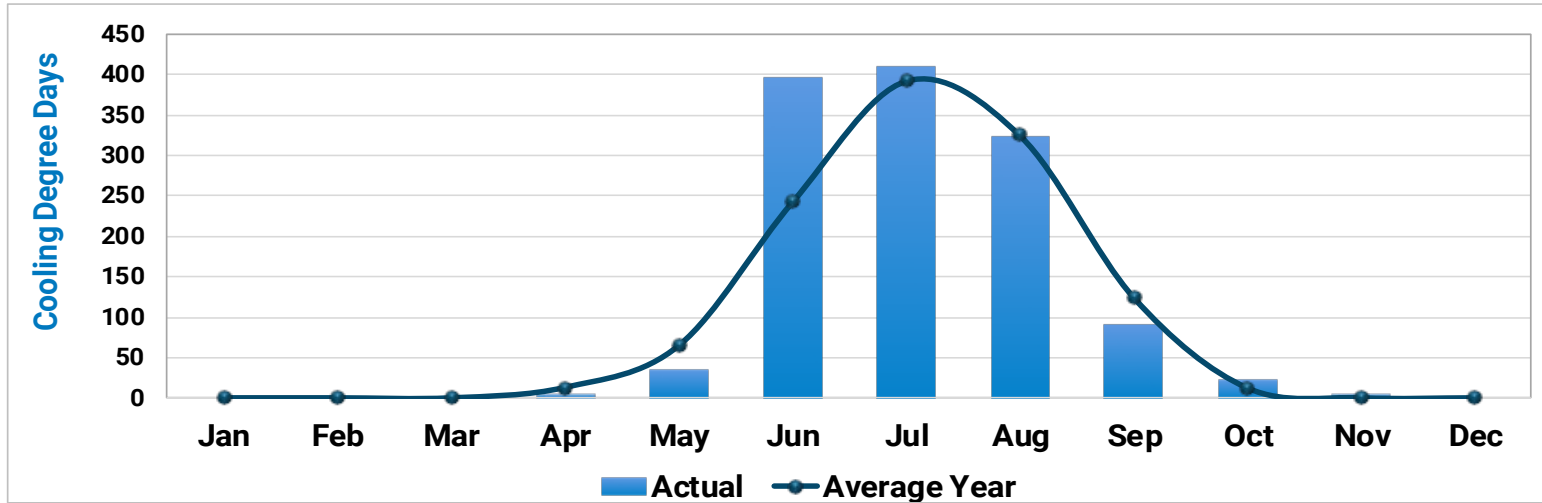


Source: U.S. Energy Information Administration – Henry Hub Natural Gas Spot Price

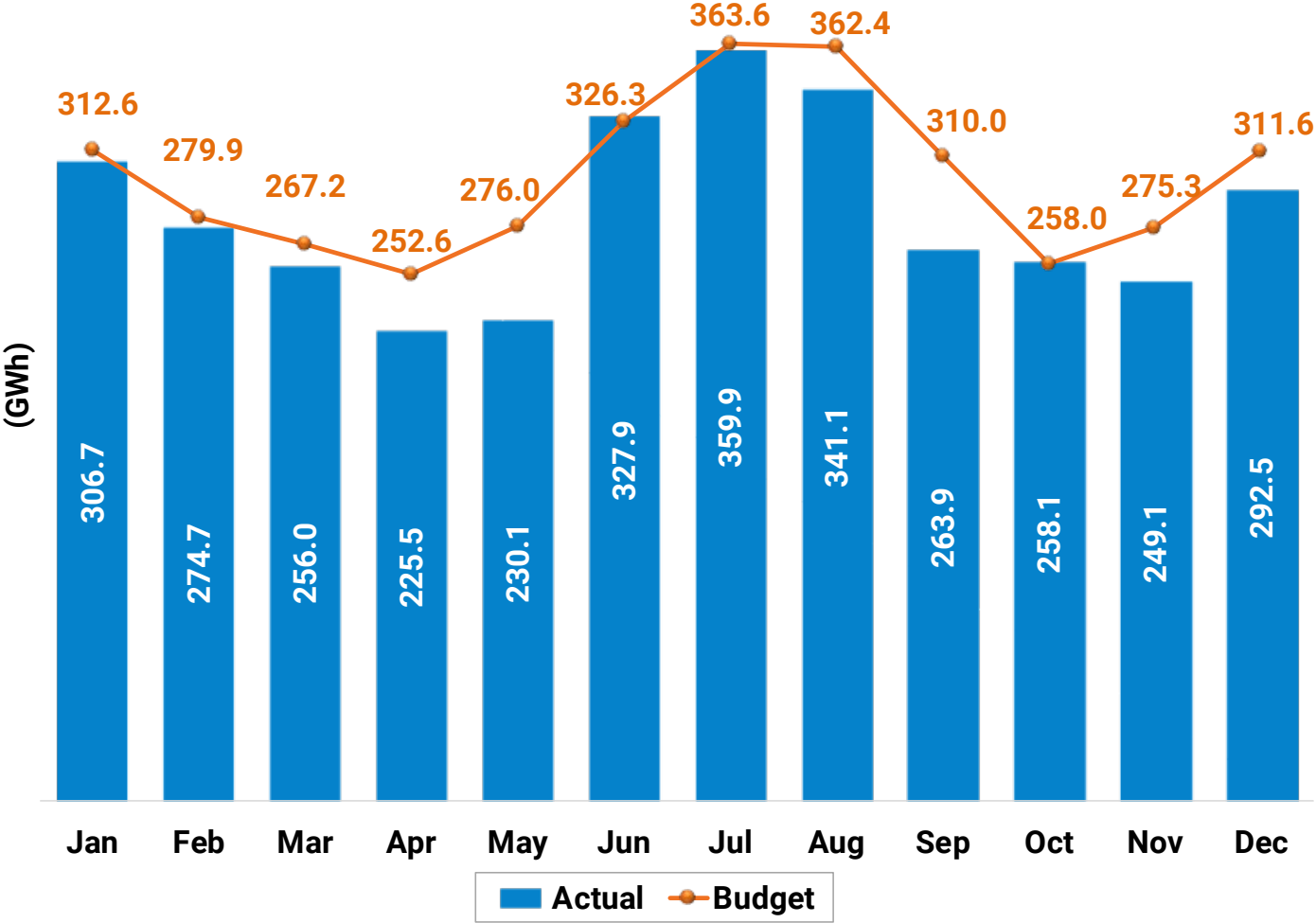
# Low natural gas prices and low loads kept electricity prices below Budget, with the exception of October when an uptick in footprint generator outages pushed up prices



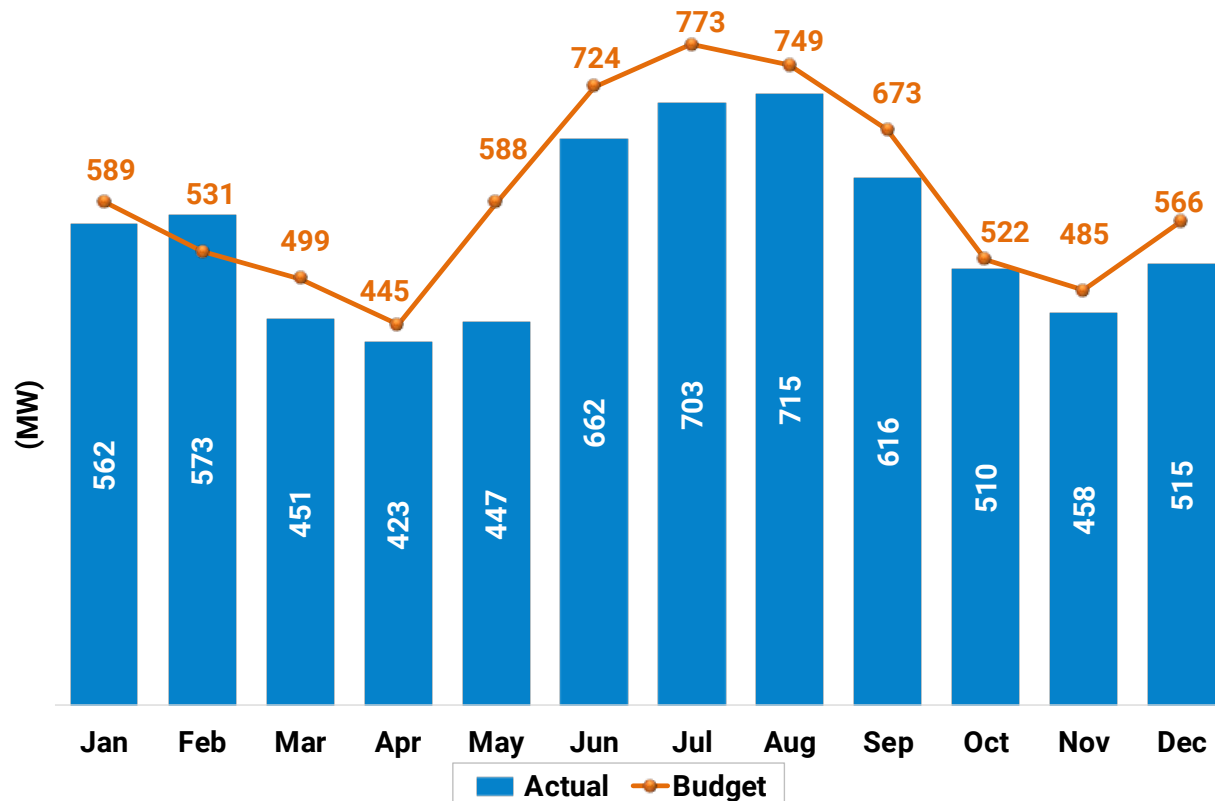
# 2020 saw weather volatility with June cooling degree days 62% above average, September 28% below average, and October heating degree days 34% above average



# Control Area Energy consumption for 2020 was 210 GWh (5.9%) below Budget



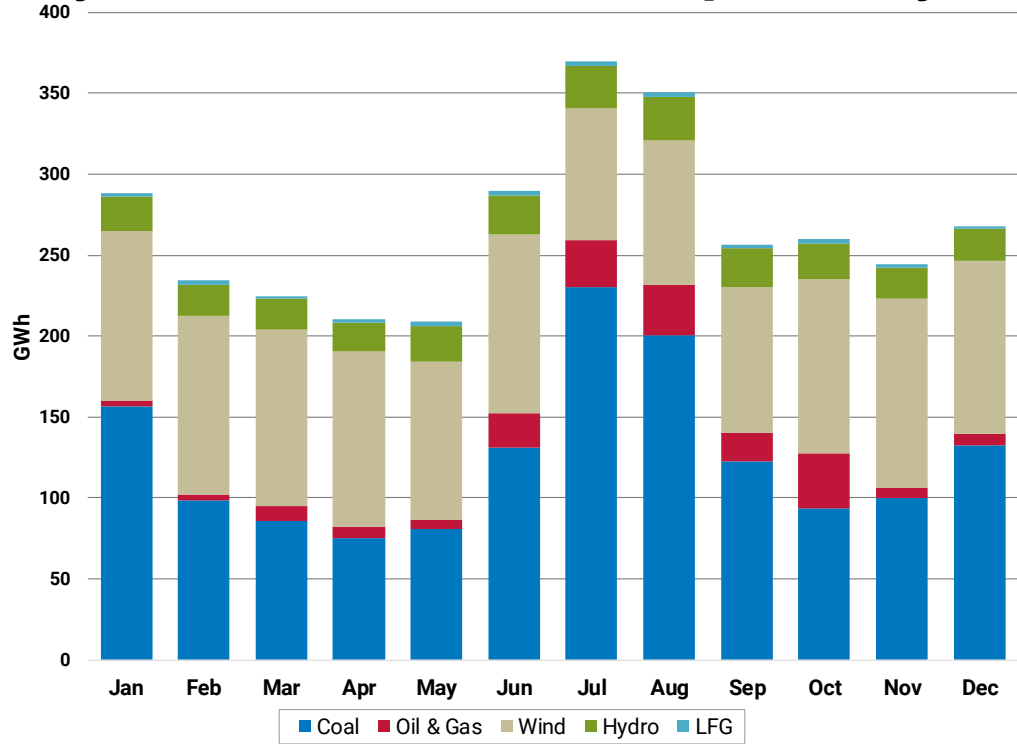
# 2020's peak load of 715 MW is the lowest peak load recorded since 2001's 704 MW peak



**System Peak Load**

**2020 Peak Load Day = 715 MW, 8/27/2020**  
**All Time System Peak = 786 MW, 8/1/2011**

# 2020 renewable energy production was 1.7% below expectations while output from our traditional resources was 42% below Budget mostly due to economic dispatch by the market

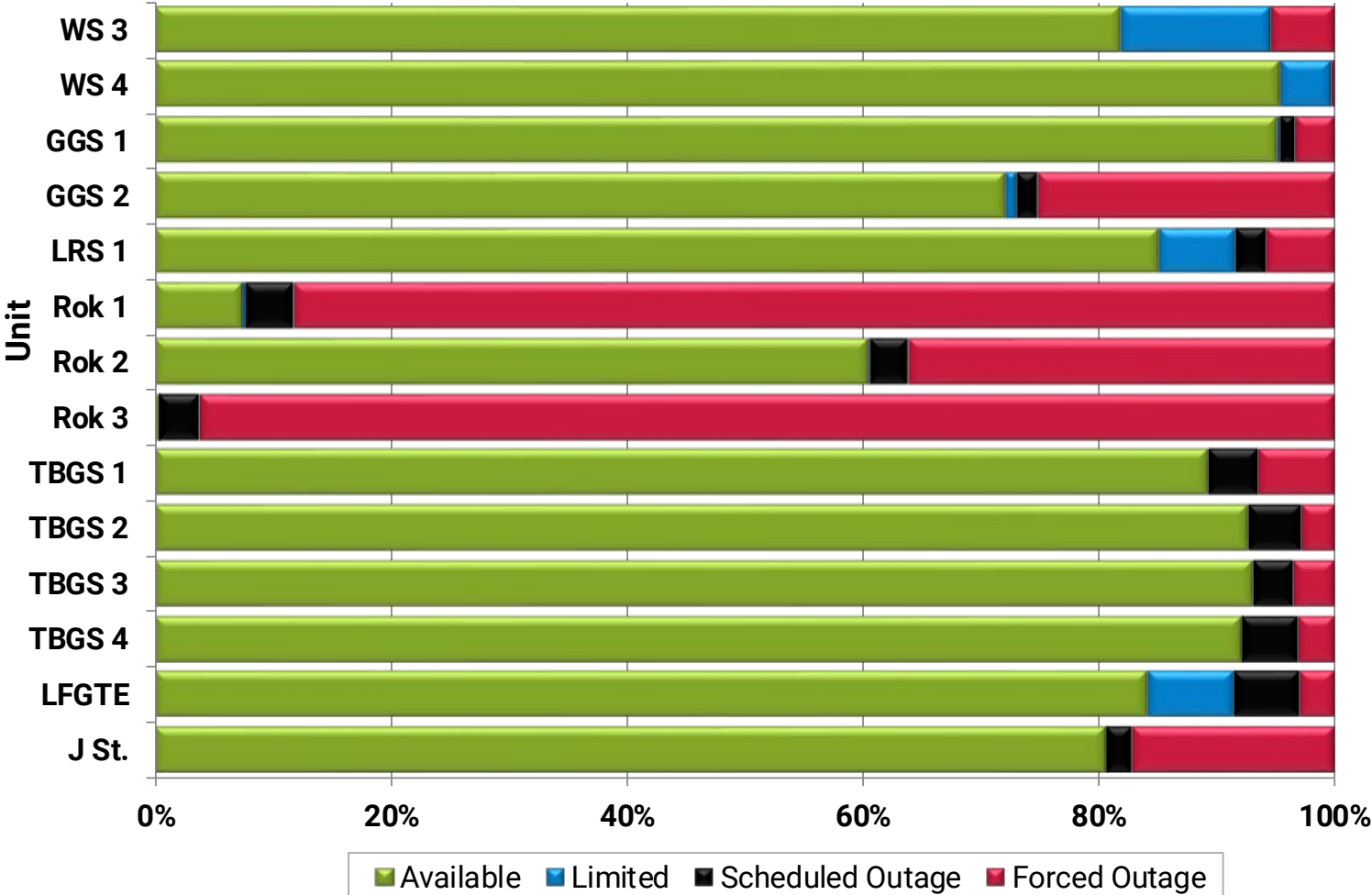


## Renewable Energy Production

**Year to Date Renewable Energy Production Expressed as a Percentage of Retail Sales:**  
**Forecast = 46.6%**  
**Actual = 49.2%**



# Rokeby Unit 1 was placed back in service in December. Rokeby Unit 3 remained on outage while the OEM continued conducting engineering reviews of a mechanical issue.



# 2020 Market Energy Metrics (January through December)

