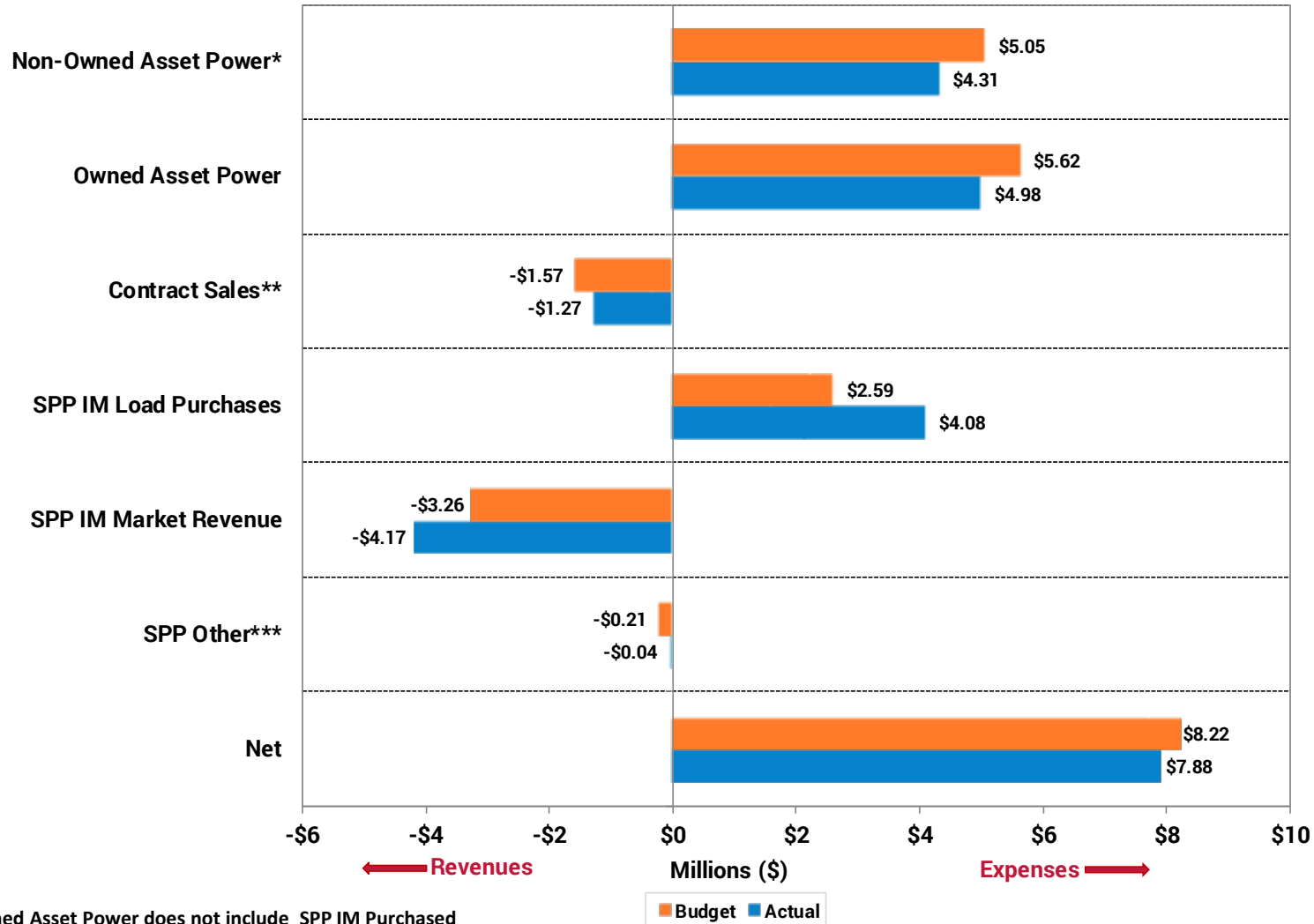


Power Supply Division 2019 February Monthly Report

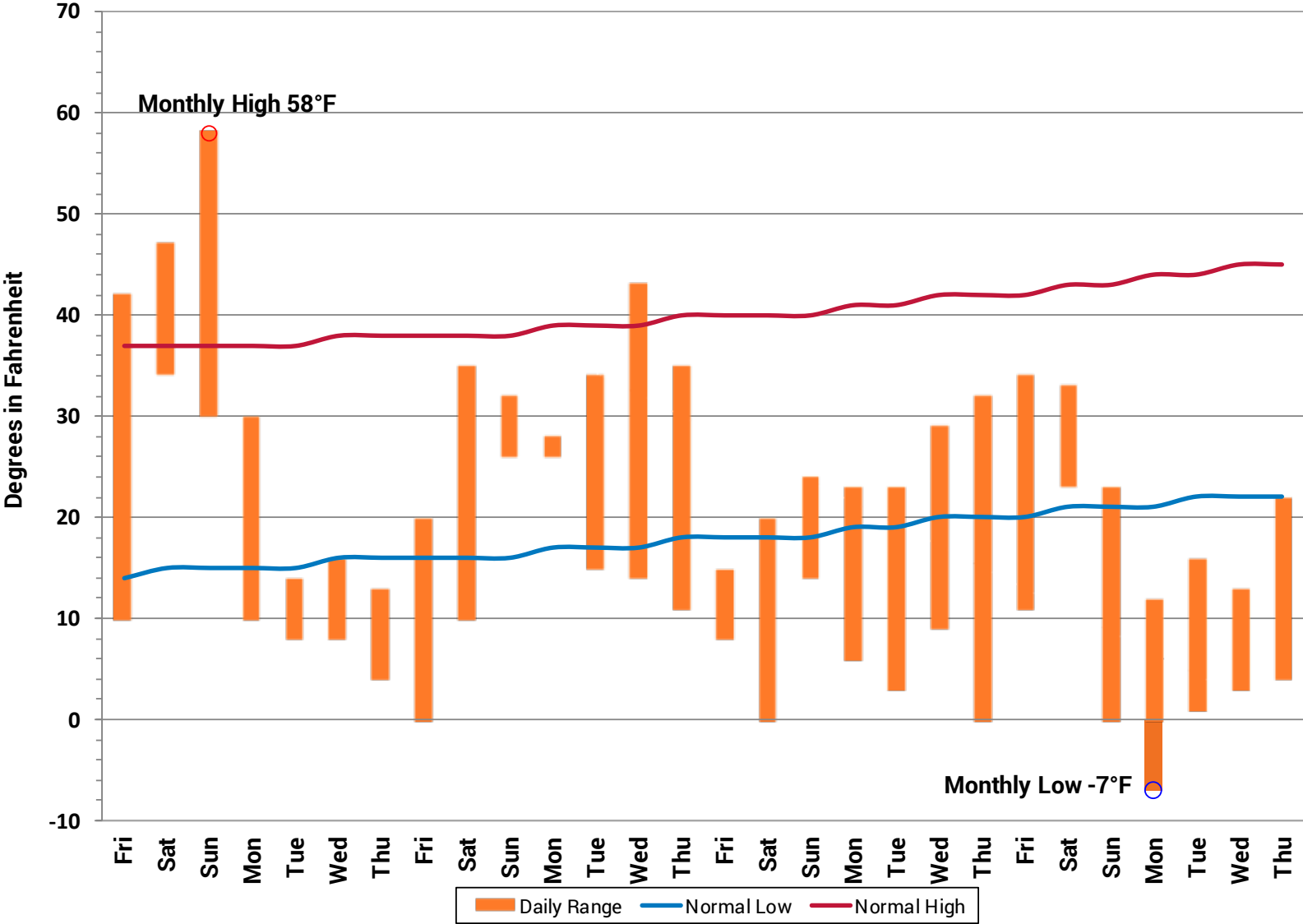
**Jason Fortik
March 15, 2019**

Monthly Actual vs. Budget

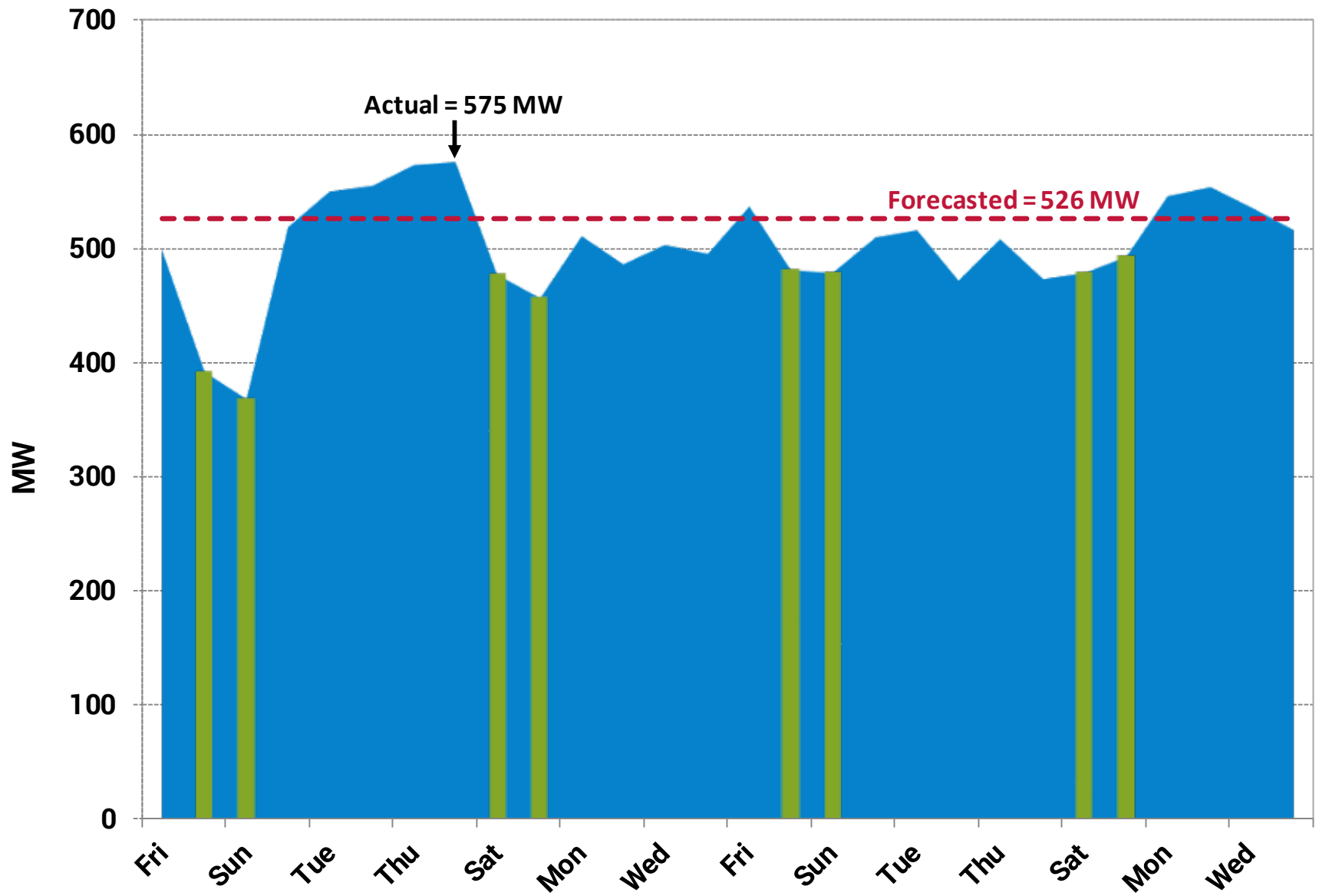


*Non-Owned Asset Power does not include SPP IM Purchased
 **Contract Sales does not include SPP IM Revenue
 ***SPP Other includes Over-Collected Losses and ARR's/TCR

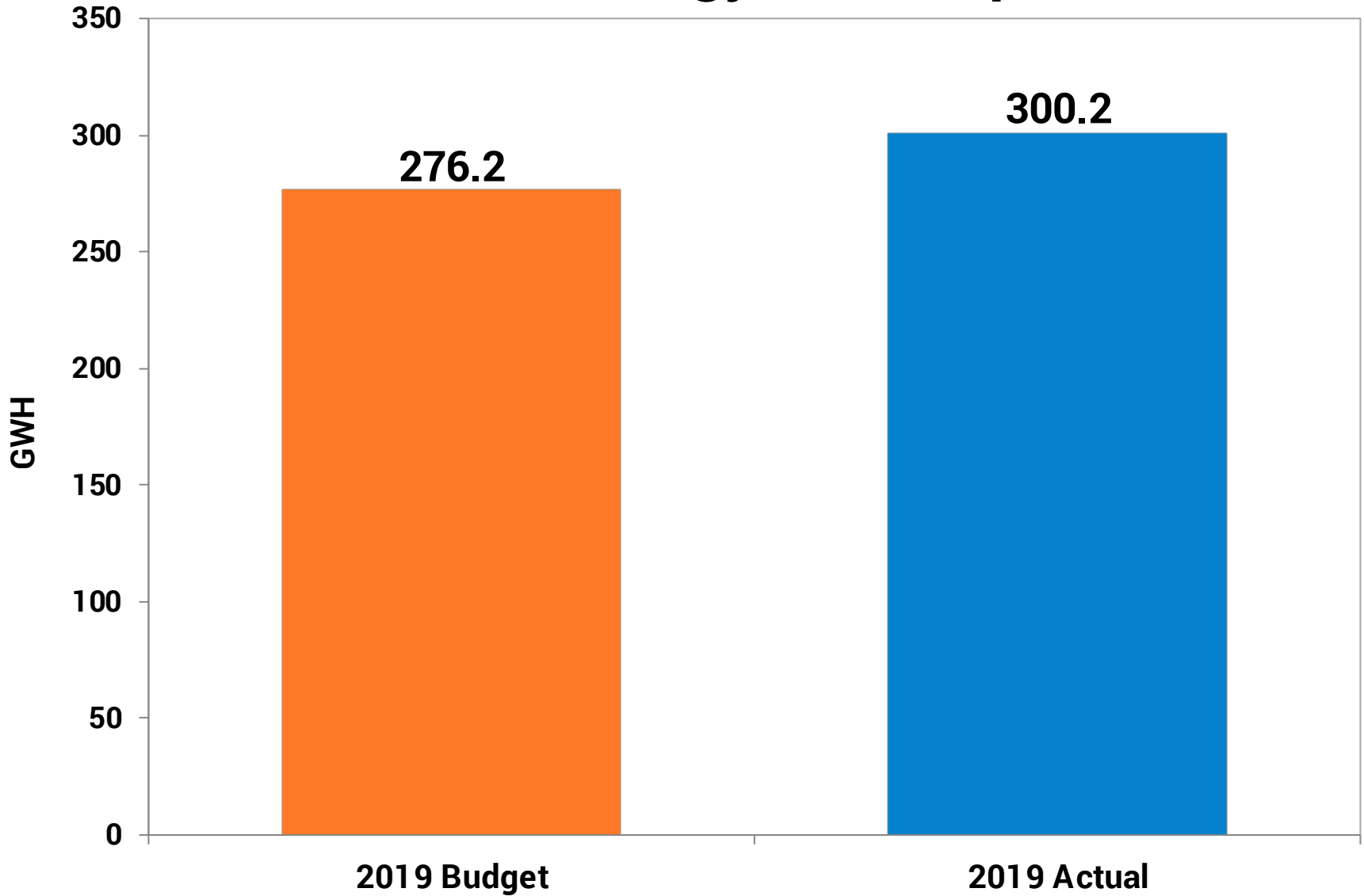
Daily Temperature Range



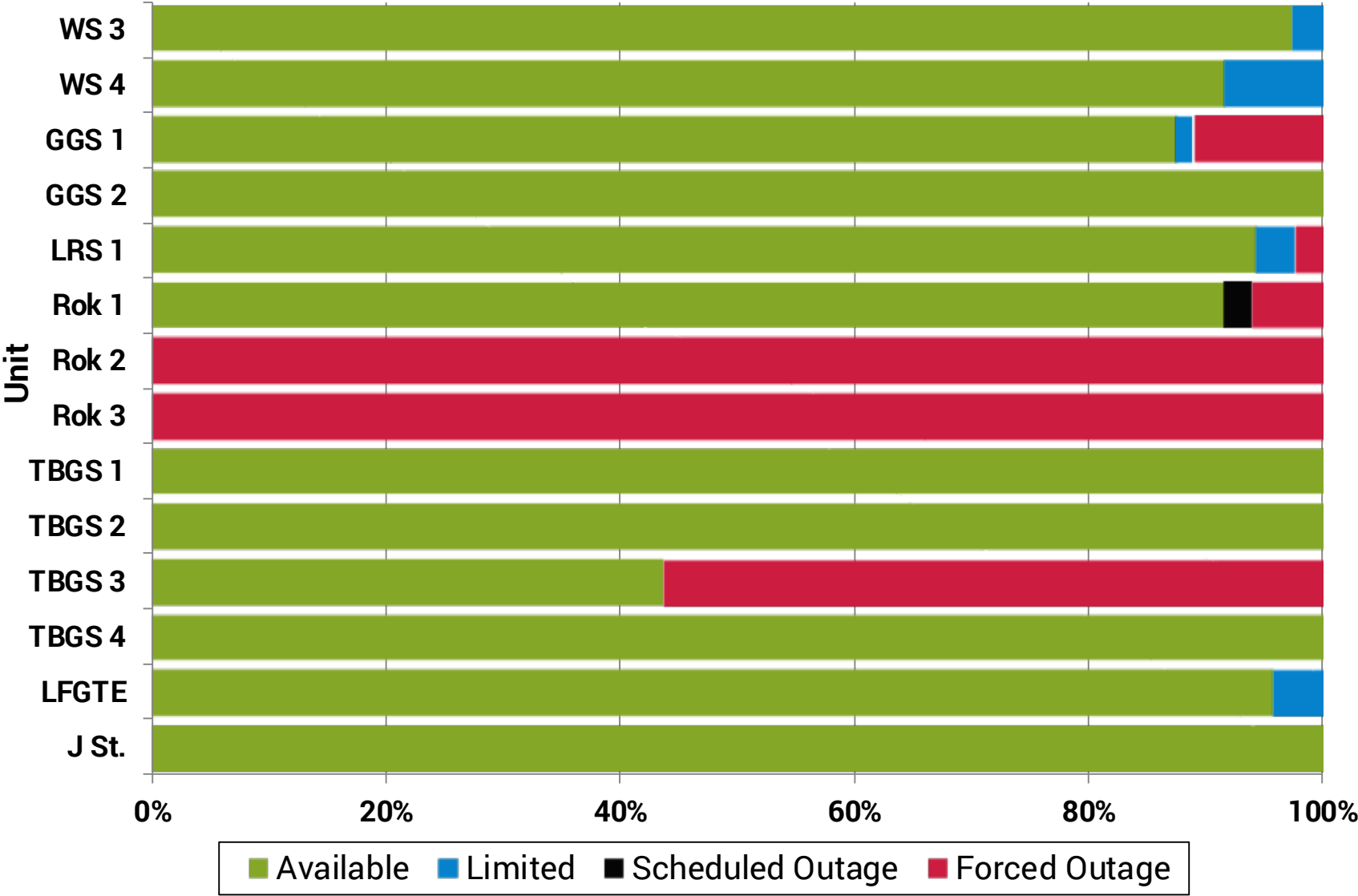
Loads



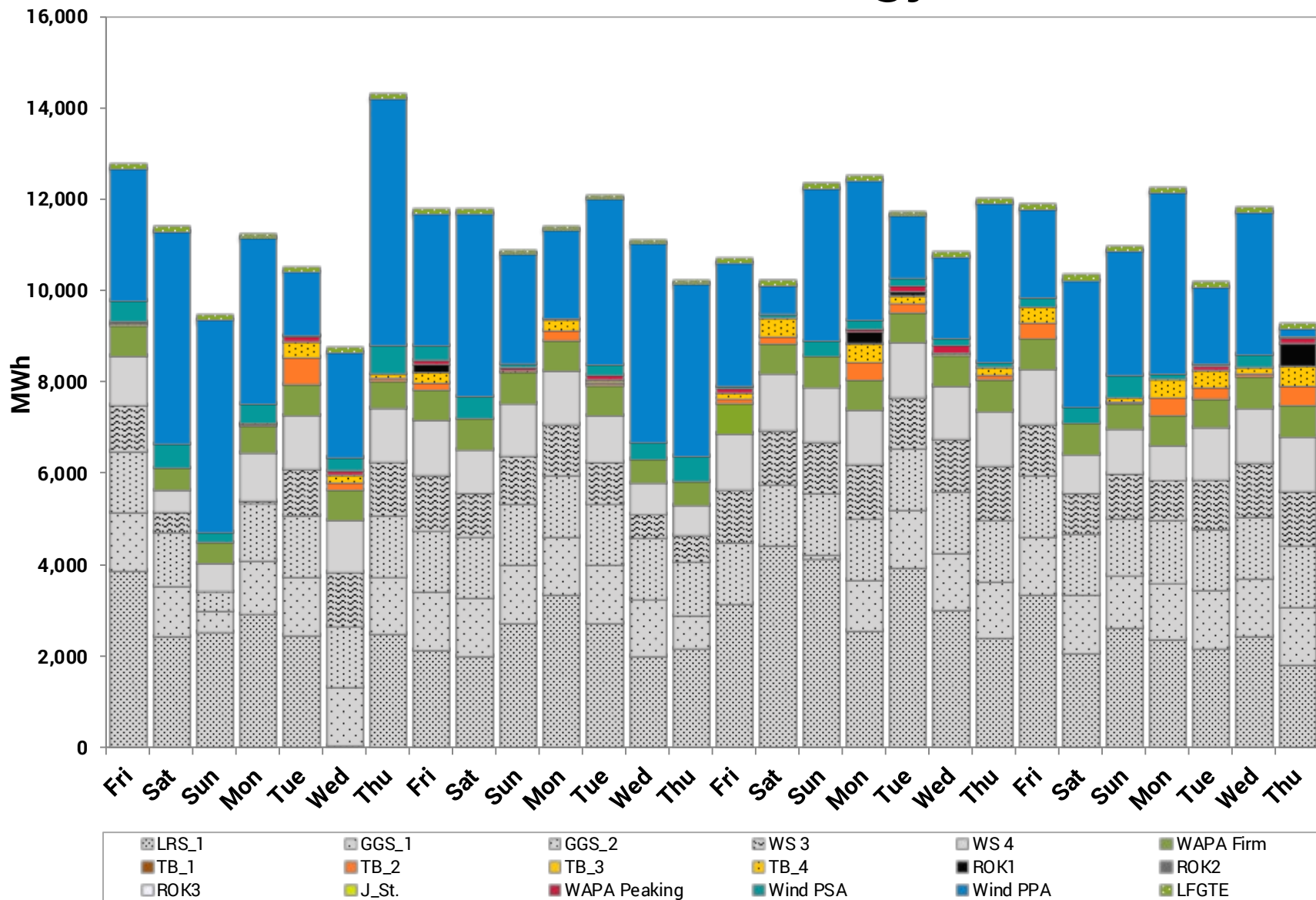
Customer Energy Consumption



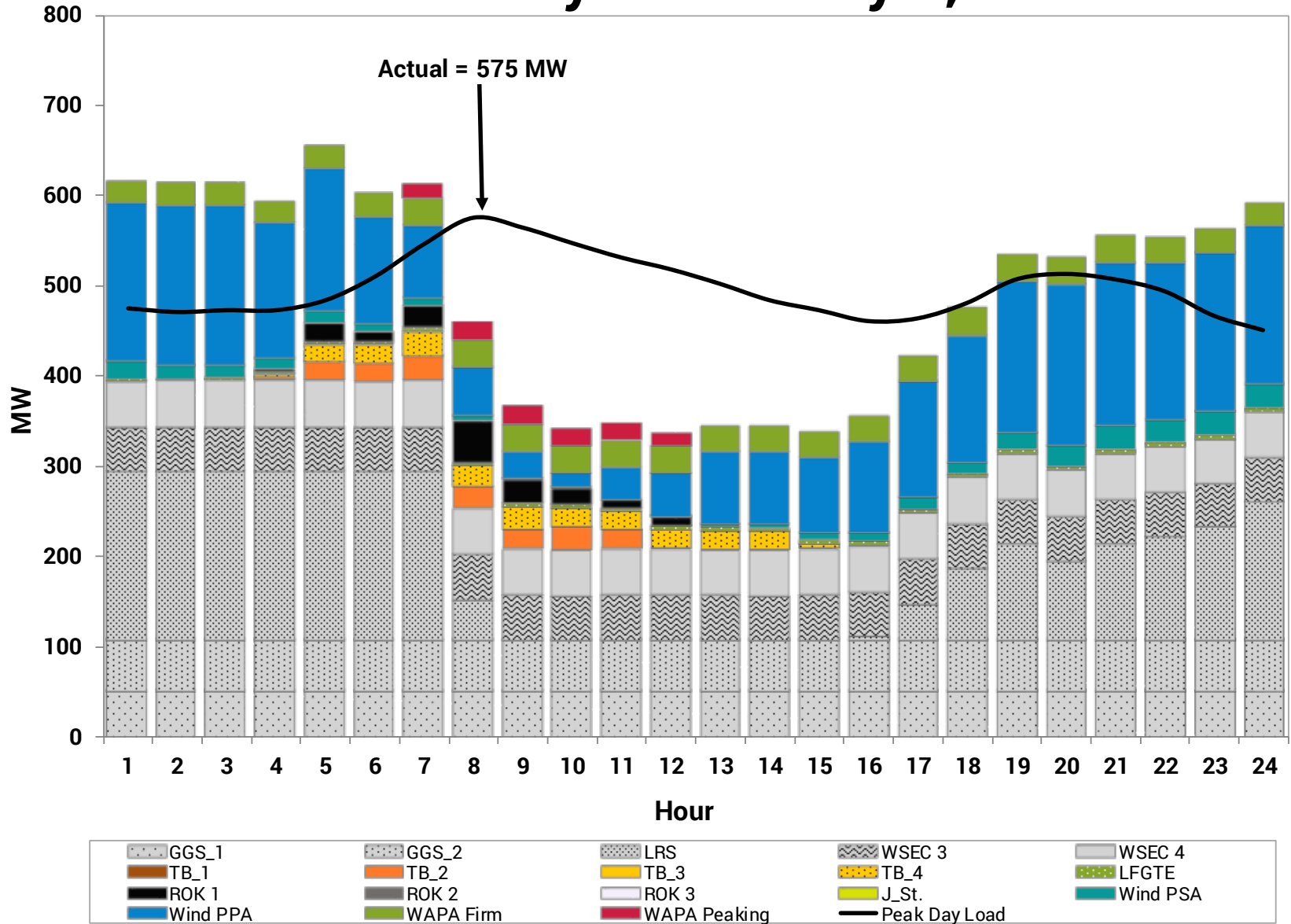
Unit Equivalent Availability



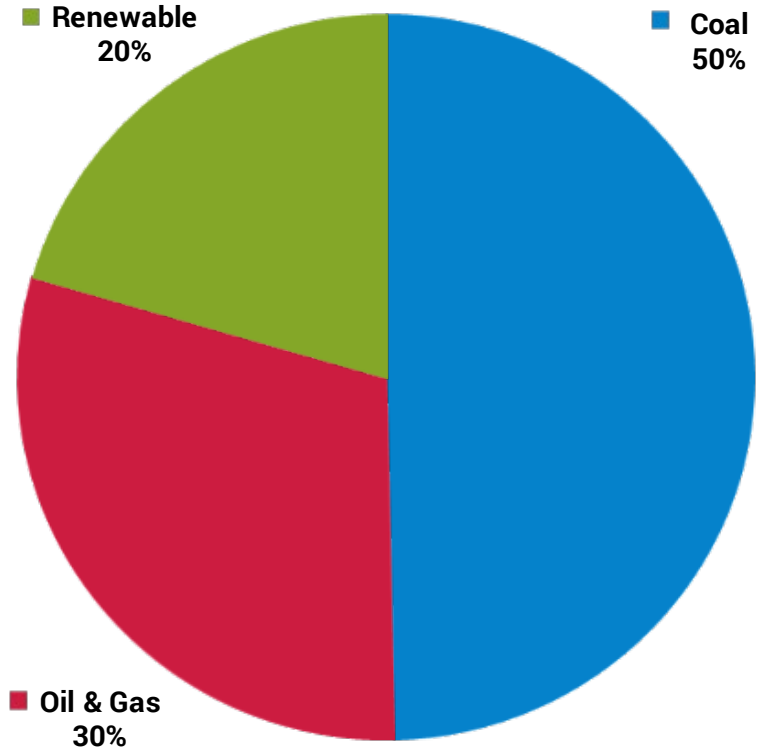
Resource Energy



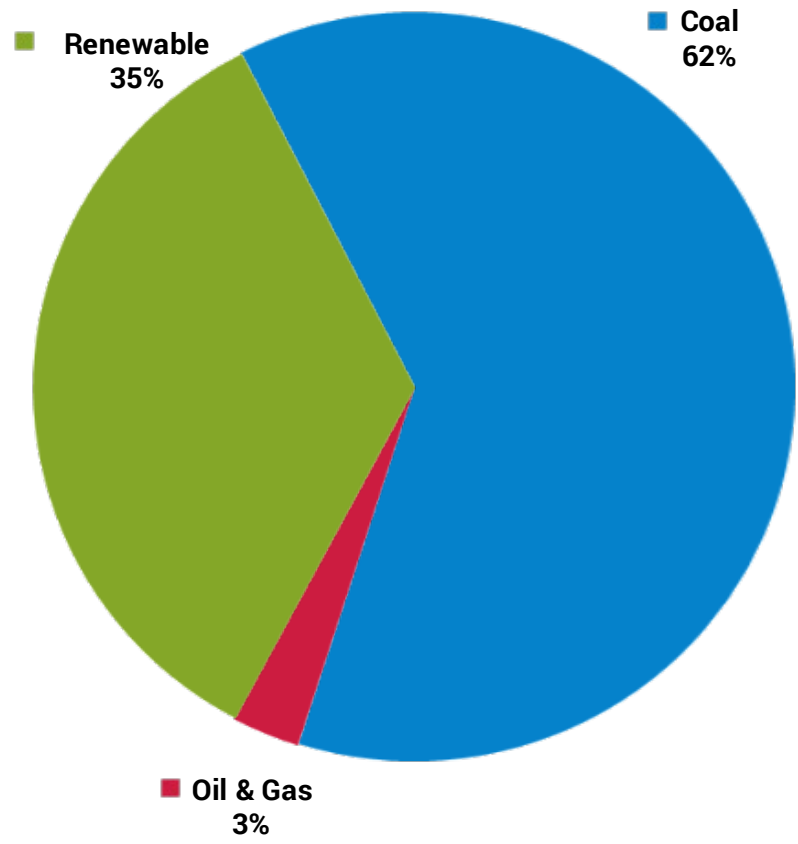
Peak Load Day – February 8, 2019



**Energy Offered to SPP IM -
Approximate (Fuel Type)**

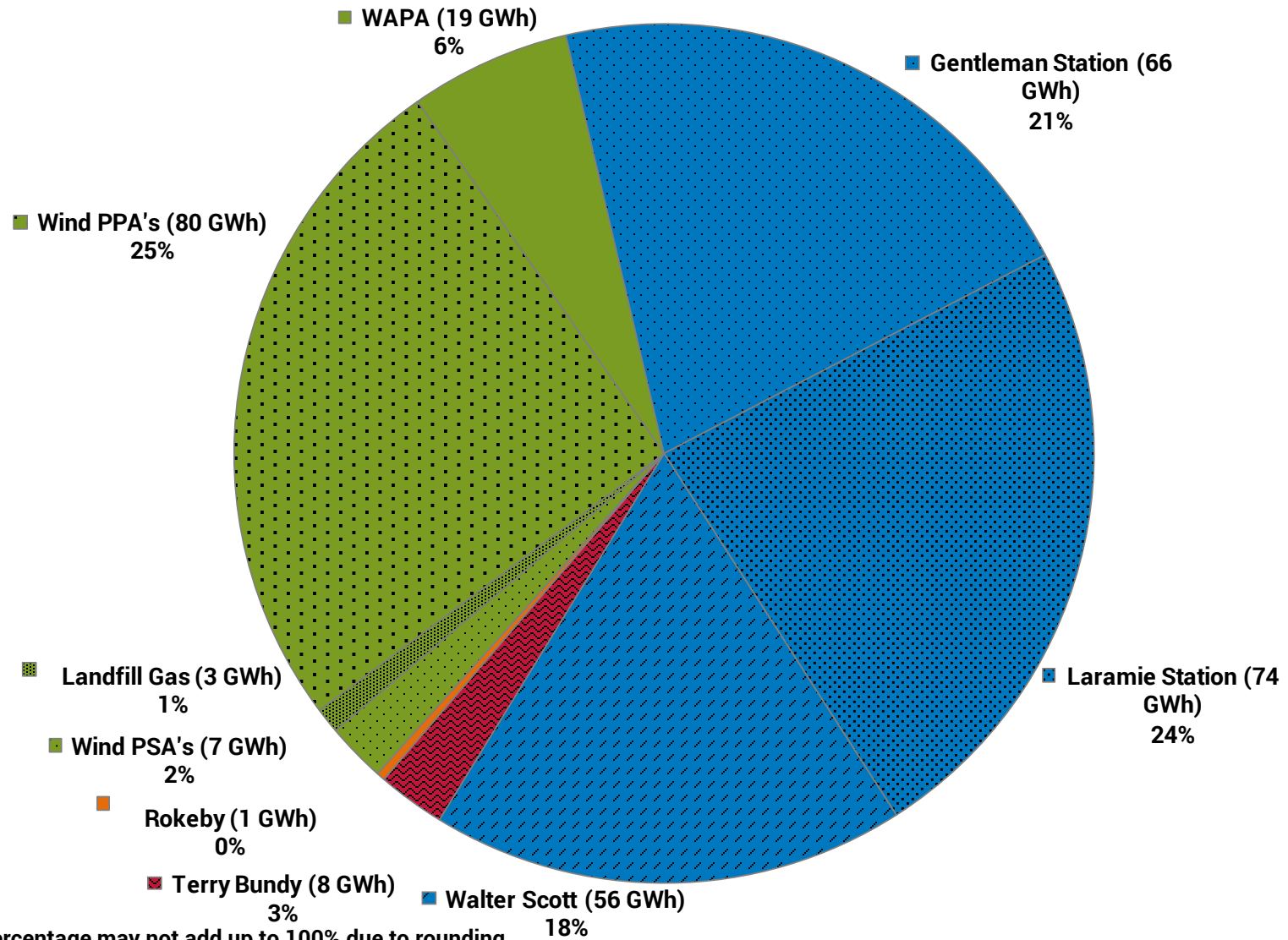


**Energy Utilized by SPP IM -
(Fuel Type)**



Note: Total percentage may not add up to 100% due to rounding

Energy Utilized by SPP IM



Note: Total percentage may not add up to 100% due to rounding