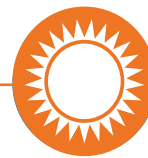


Customer-owned Renewable Generation

Net Metering 25 kW_{AC} or less



Effective Jan. 1, 2016

p: 402.475.4211
f: 402.475.0446
w: www.les.com
1040 O Street, P.O. Box 80869
Lincoln, NE 68501-0869

How does the program work?

Owners of solar, wind and other qualifying renewable generation of 25 kW_{AC} or less can use the electrical output of their system to supply all or a portion of their monthly electric use and sell the surplus to LES.

How will you be compensated?

Any net positive energy delivered to LES will be credited to the customer's bill each month. LES will subtract the cost of the metered energy supplied to LES. LES will purchase any excess energy according to the [Renewable Net Metering Rider](#).

In addition, customers may qualify for a one-time capacity payment of up to \$1,000 per kilowatt of peak demand reduced. The total amount customers can receive is determined by the system size and primary direction the system is facing, for example:

- *Southern facing fixed-photovoltaic solar - the unit's nameplate DC capacity (kW) x \$375.*
- *Western facing or single or dual-axis tracking fixed-photovoltaic solar - the unit's nameplate DC capacity (kW) x \$475.*

- *Wind - No capacity payment.*
- *Other technologies - \$1,000 x the average net demand output of the generation (kW) at 5 p.m. during the months of July and August (as determined by LES).*

Safety requirements

An outside-mounted visible disconnect switch shall be installed on the owner's side of the point of delivery/receipt near the meter or some other mutually agreed location. Such equipment must be capable of preventing the renewable generation from energizing the LES service wires and must include a device which, at LES' discretion, allows LES employees to operate and lock in place. For the safety of LES personnel and the

electrical system, interconnection of any power-generating device to LES power lines must have a permit, be inspected and be approved prior to operation.

In addition to the required disconnect switch, your inverter must meet the current UL 1741 and IEEE 1547 specifications.

For more information

Visit [LES.com](#), and select **Savings & Energy > Solar & customer-owned generation** or call LES Energy Services Specialist Jay Stoa at **402.473.3281**.



Customer-owned Renewable Generation

Net Metering 25 kW_{AC} or less

STEP 1: PLAN

- Submit LES Net Metering [Application for Review](#).
- Learn more about Net Metering at LES.com.

STEP 2: INSTALL

- Upon approval of your Application for Review, you or your vendor are free to install your renewable generation system including generator, inverter, readily accessible and lockable AC disconnection switch and other equipment as needed.
- You may not interconnect until Step 3 is completed as per site inspection and setting of bi-directional net-meter.

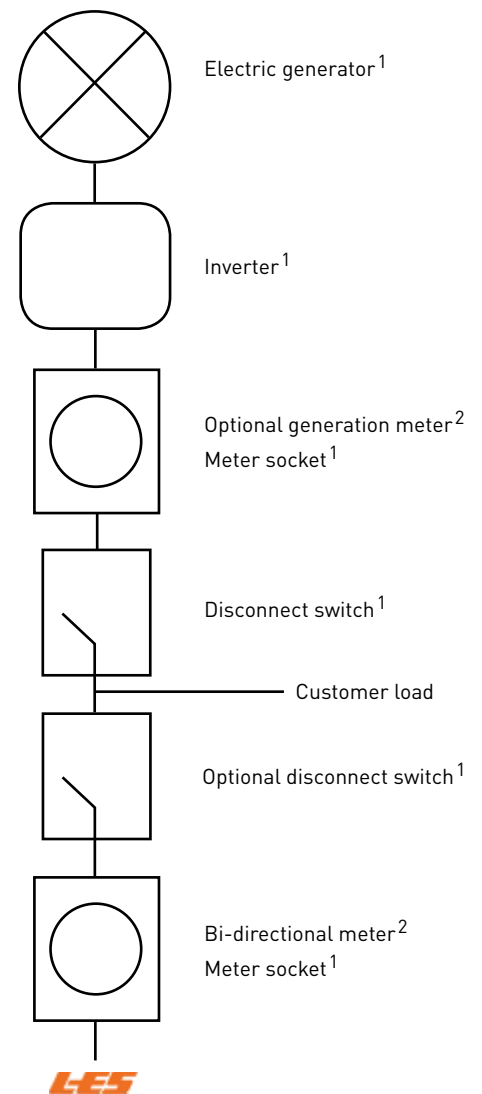
STEP 3: INSPECTIONS & INTERCONNECTION

- You or your vendor will need to request an electrical city inspection.
- Submit a signed [Net Metering Interconnection Agreement](#).
 - Forward your application form and the proposed system's technical specifications to:

Lincoln Electric System
Jay Stoa
Energy Services Specialist
PO Box 80869
Lincoln, NE 68501

- Arrange for an LES site inspection by contacting LES at **402.473.3281** or greenteam@les.com to approve system interconnection, AC disconnect switch and to set a bi-directional net-meter that will measure both energy provided by LES and energy generated by the system.
- Upon successful completion of the LES site inspection, your system will be interconnected and may be eligible for a one-time capacity payment and credit for any energy generated in excess of what you consume in a given billing period.

Sample One-line Diagram
for Interconnection of
Customer-owned Generation



¹ Customer responsibility

² LES responsibility