

Transmission Line Corridors-Agricultural



Corridor restrictions on agricultural property

Safety & Reliability

Transmission corridors connect the high voltage power grid and are subject to right-of-way easement restrictions. Understanding these restrictions helps ensure public safety and grid reliability. Vegetation and man-made obstructions are hazardous when located too close to transmission lines. In fact, contact with energized lines will cause serious property damage and may result in bodily injury or even death. Items and activities within the transmission corridor are restricted to ensure public safety, maintain reliability, and provide ready access by LES crews and contractors.

Access & Obstructions

LES patrols transmission lines in the spring and fall to identify safety hazards, line maintenance needs, and obstructions. Obstructions include vegetation, structures, swimming pools, lagoons, ponds, grade changes, billboards, poles, antennas, bulk materials, hay bales, large equipment, combustible materials, and anything else that may endanger, impede access, or interfere with LES's operations. LES reserves the right to remove fencing if necessary to maintain the transmission line. LES works with individual landowners to correct issues identified during the line patrols.

If you have questions, contact LES Land Management at **402-467-7621**.

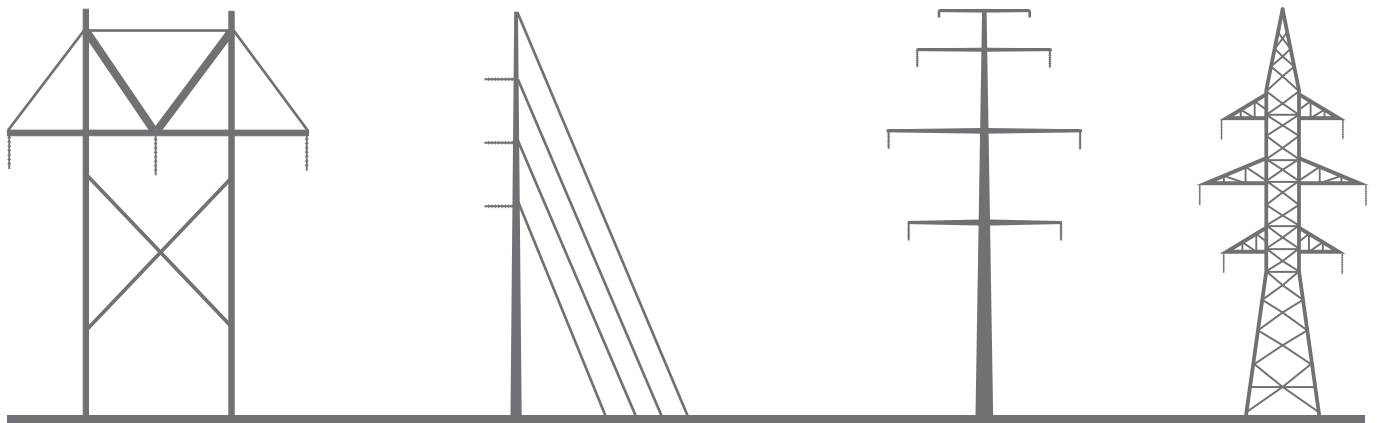
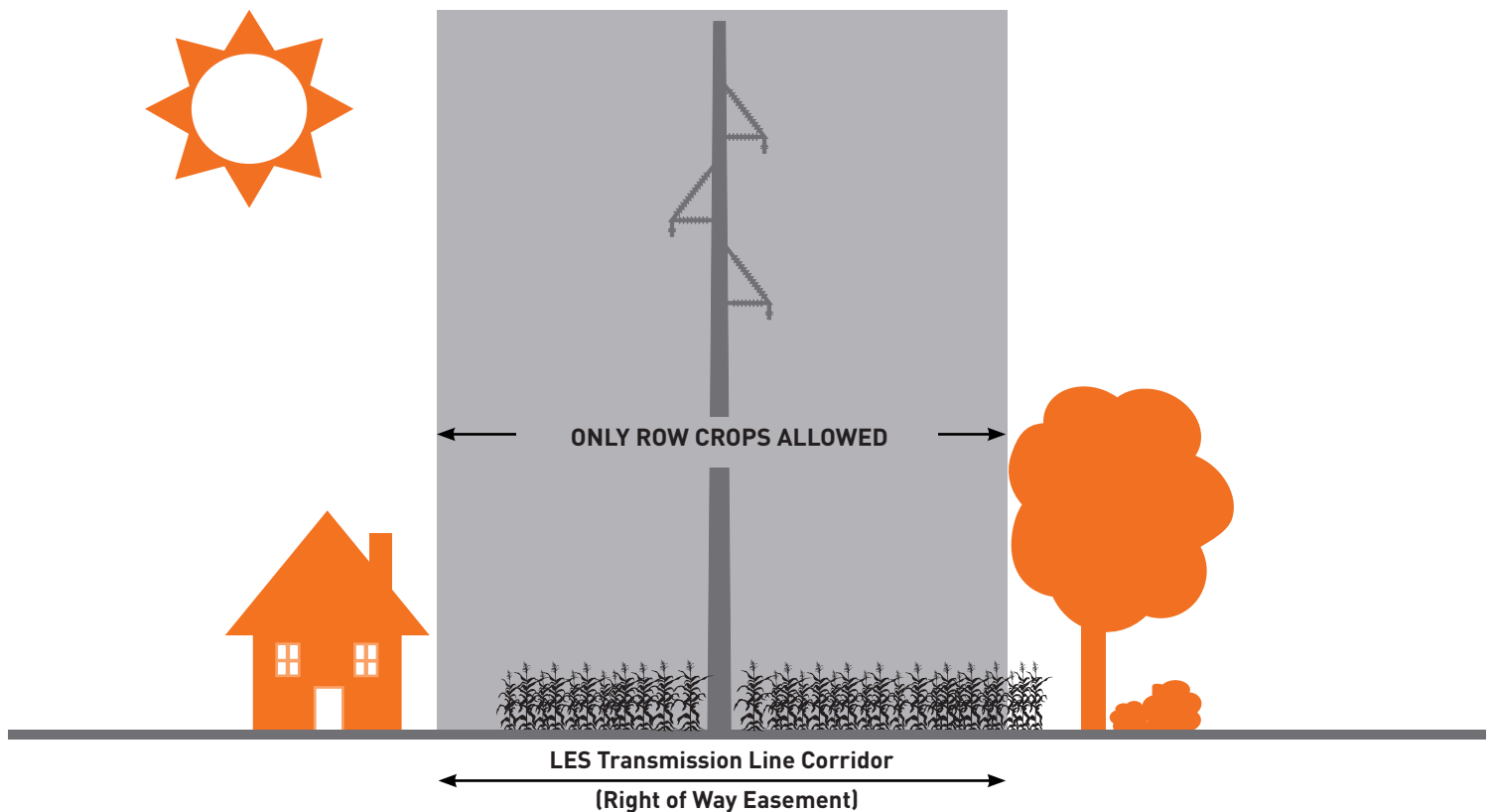


Agricultural

Agricultural Corridors

Above-ground obstructions are not allowed within Agricultural Corridors. LES allows crops such as corn and soybeans, but woody stem vegetation such as trees

and shrubs are not allowed and will be removed. Grade changes need to be reviewed and approved by LES to ensure safety clearances are maintained.



Examples of LES Transmission Structures