

Power Supply Division 2022 October Monthly Report

November 18, 2022

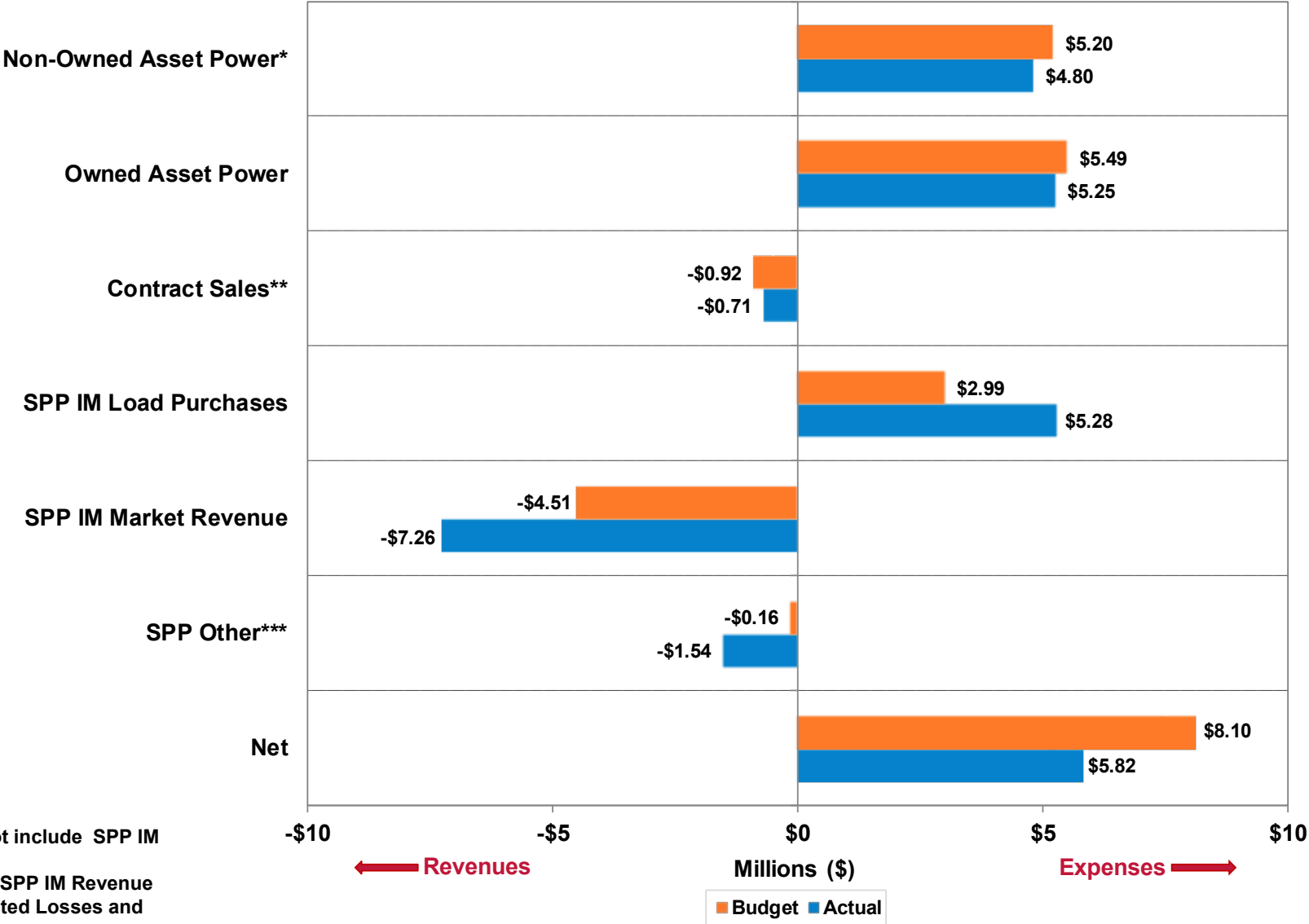
Jason Fortik

Vice President, Power Supply



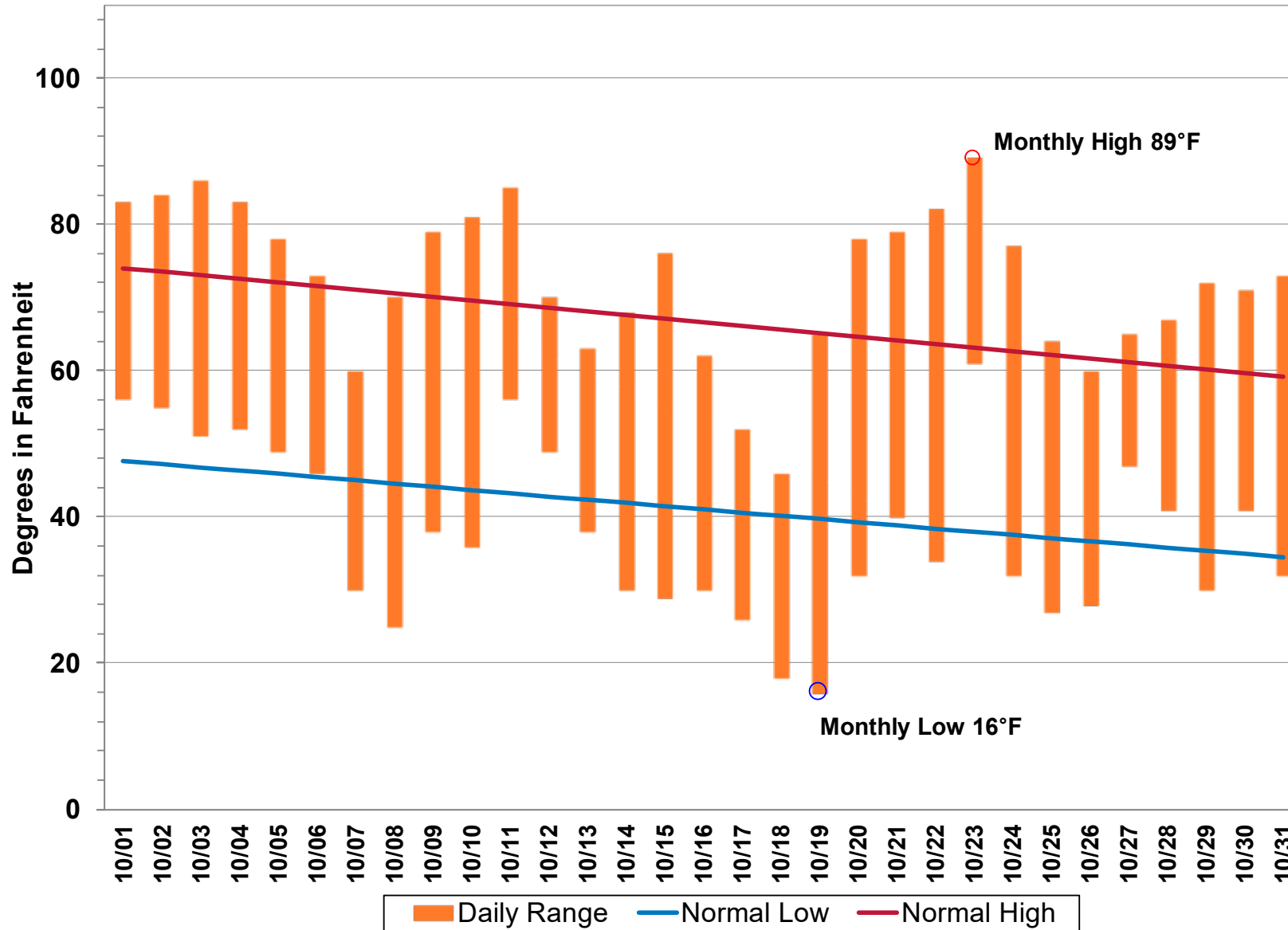
Lincoln Electric System

Monthly Actual vs. Budget

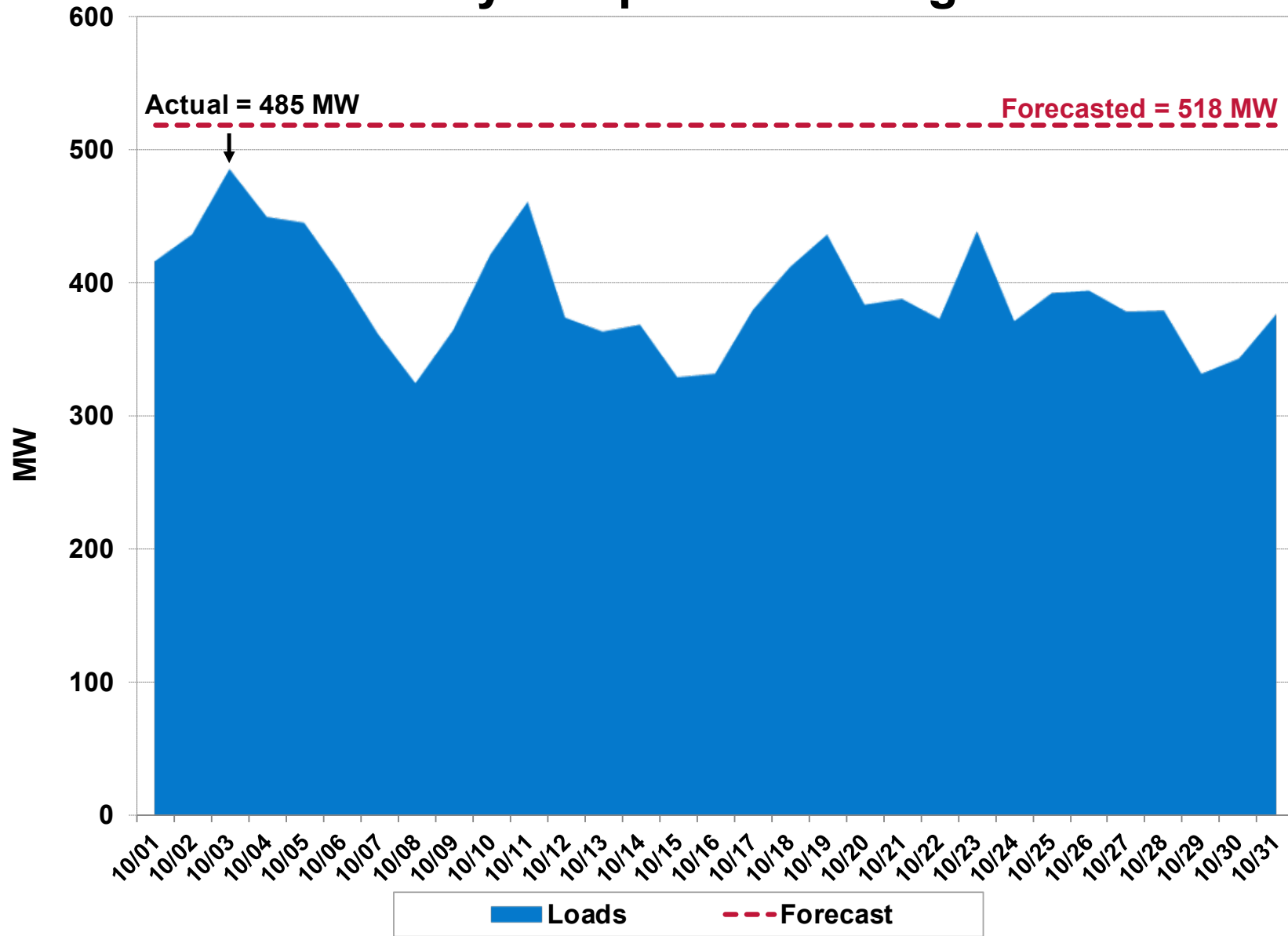


*Non-Owned Asset Power does not include SPP IM Purchased
 **Contract Sales does not include SPP IM Revenue
 ***SPP Other includes Over-Collected Losses and ARR's/TCR

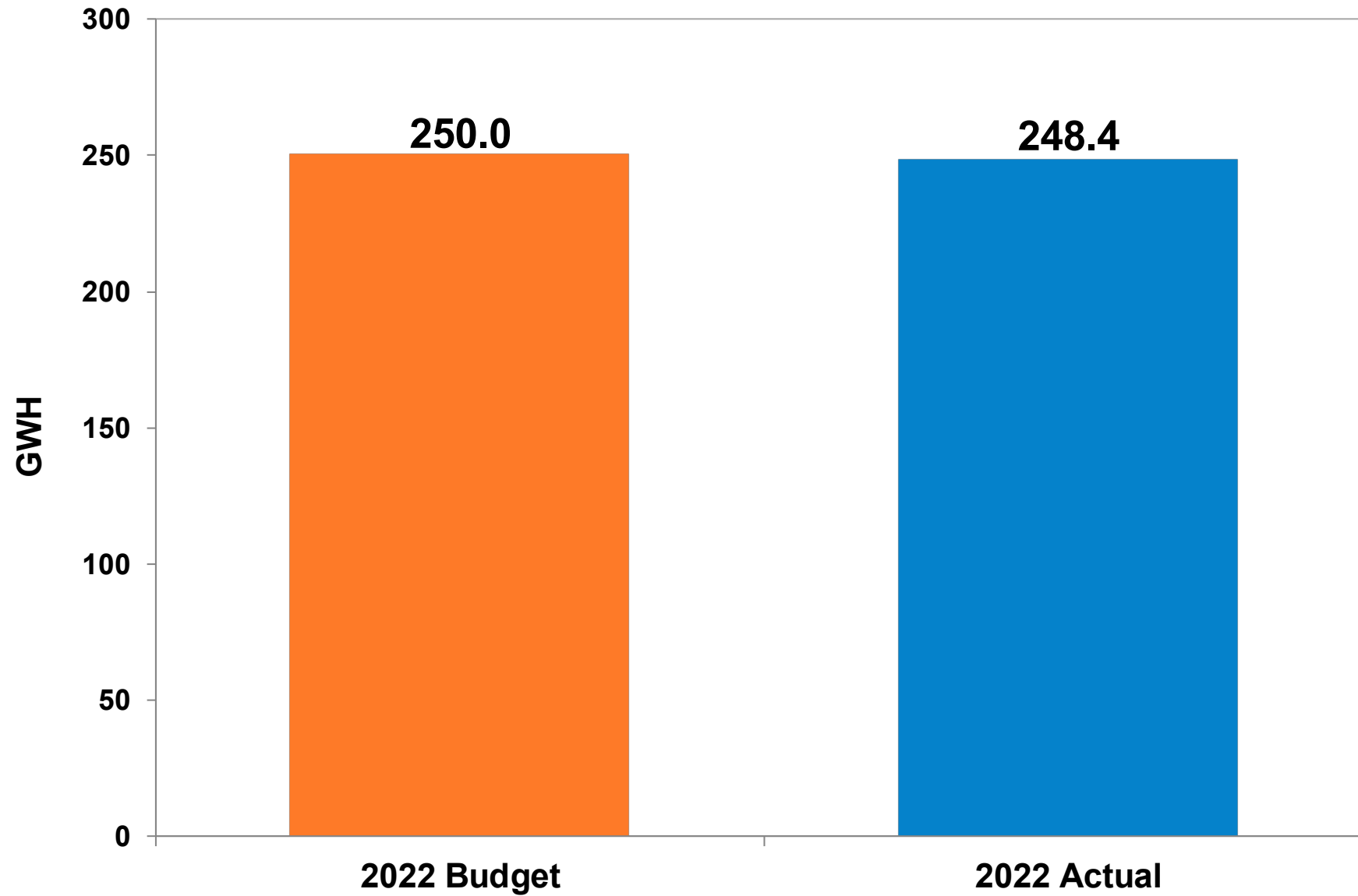
Daily Temperature Range



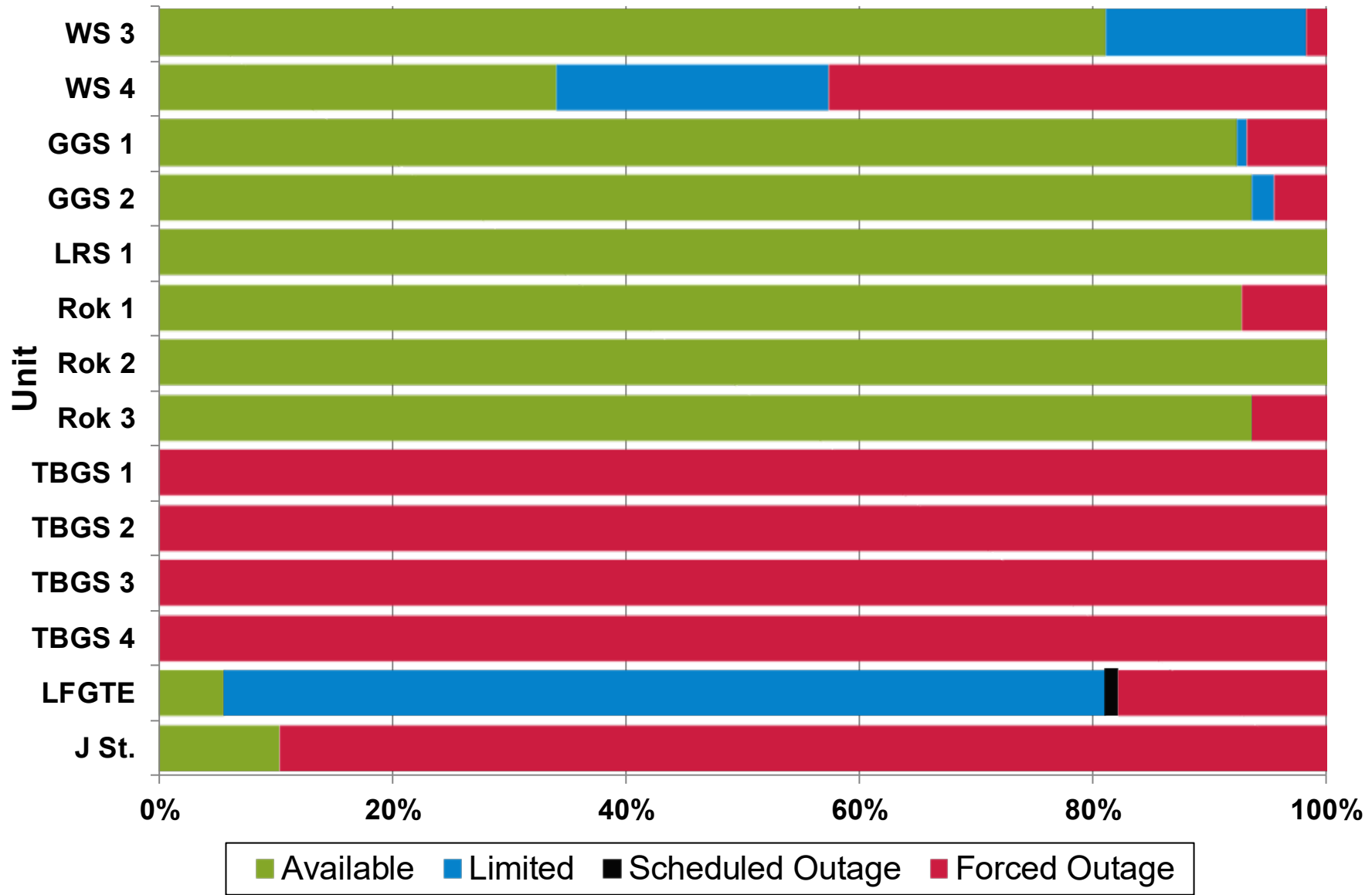
Daily Temperature Range



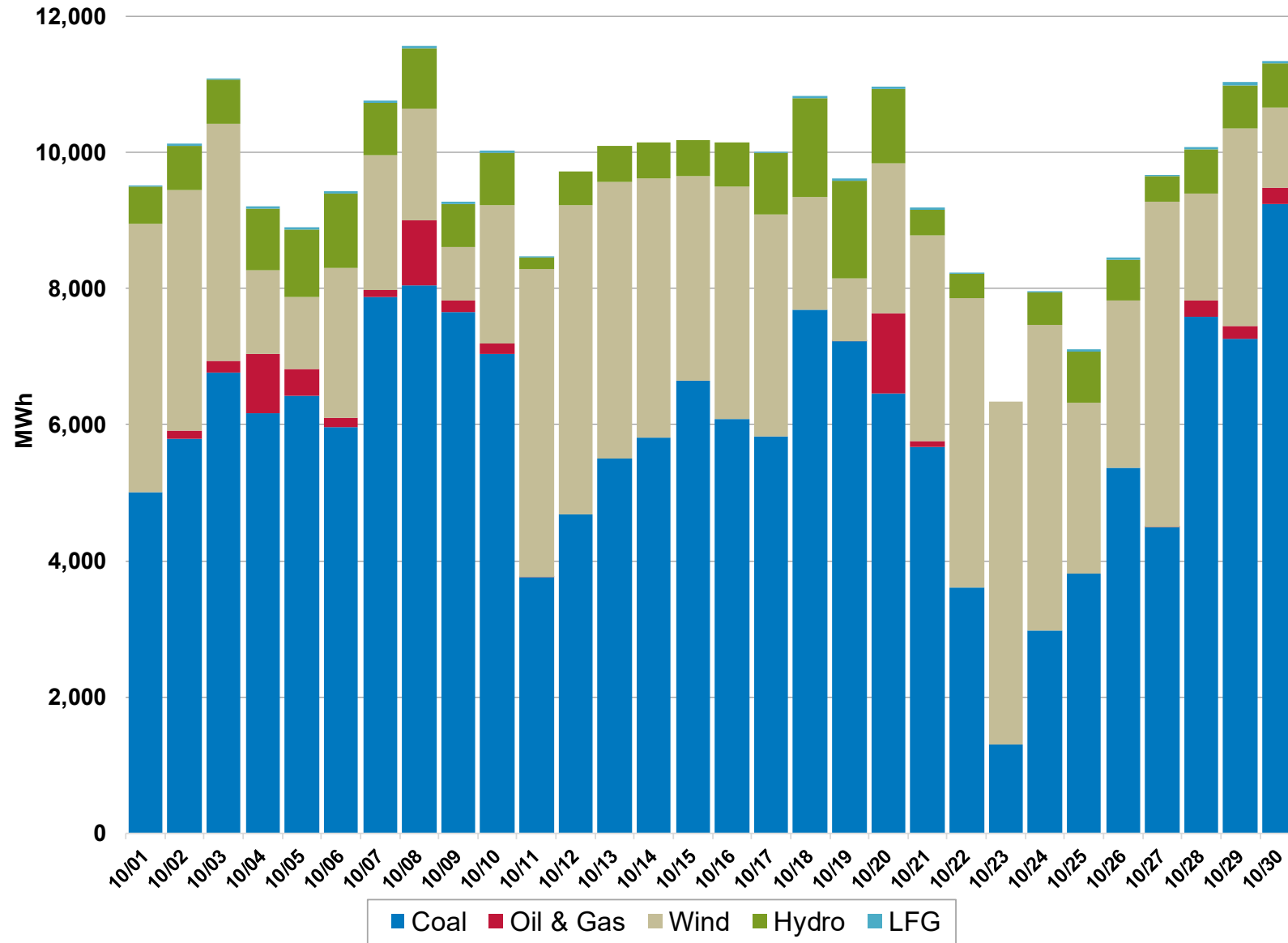
Customer Energy Consumption



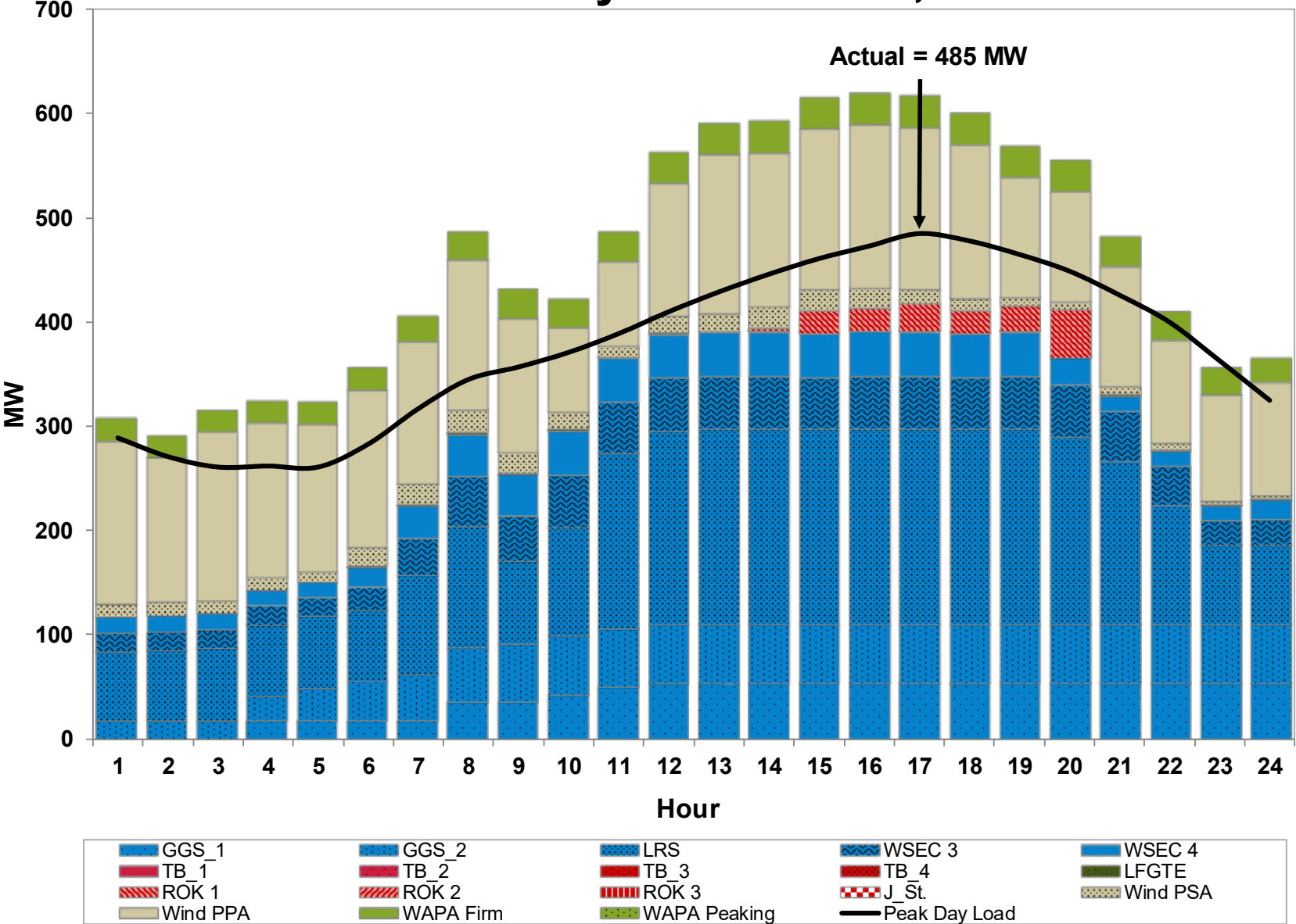
Unit Equivalent Availability



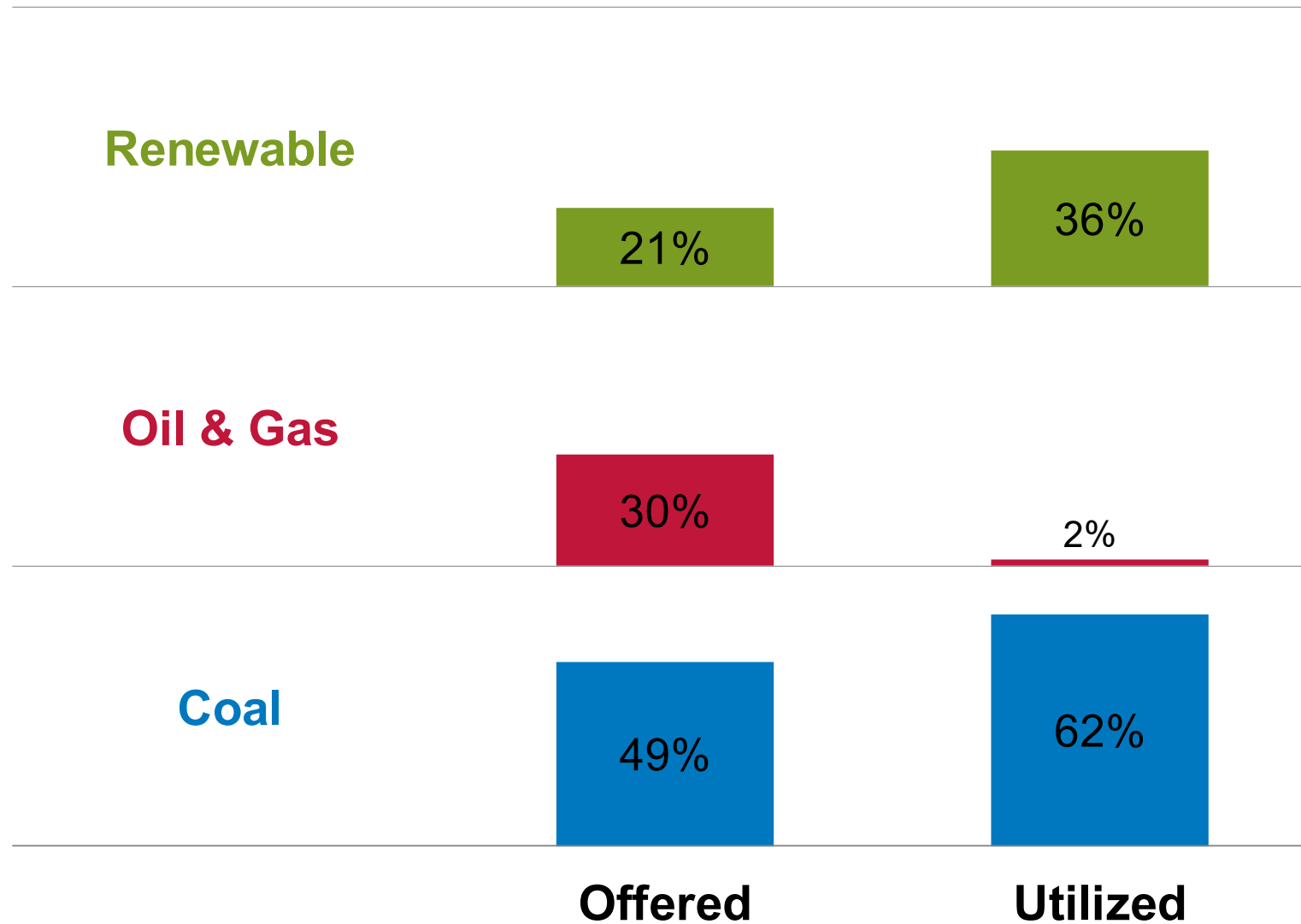
Resource Energy



Peak Load Day – October 3, 2022



Energy Offered and Utilized by the SPP Integrated Marketplace (Fuel Type)



Note: LES is selling the Renewable Energy Certificates (RECs) associated with its applicable resources and the renewable attributes are transferred to the REC recipient. Total percentage may not add up to 100% due to rounding

Energy Utilized by the SPP Integrated Marketplace

